

PRM

ISO 21287 Stainless steel compact pneumatic cylinders Ø 20 ÷ 100 mm

- Stainless steel AISI 316
- Double acting and single acting versions
- Through piston rod versions
- FDA approved piston seals

Available ATEX version upon request

CE II 2GDc T4



TECHNICAL CHARACTERISTICS

| | |
|---------------------|---|
| Ambient temperature | 0 ÷ 80 °C (-20°C with dry air) |
| Fluid | compressed air, filtered air, not lubricated |
| Working pressure | 1 ÷ 10 bar (double acting) 2 ÷ 10 bar (simple acting) |
| Bores | Ø 20 - 25 - 32 - 40 - 50 - 63 - 80 - 100 mm |

CONSTRUCTIVE CHARACTERISTICS

| | |
|---------------------------|---|
| End-caps | stainless steel AISI 316 |
| Barrel | Ø20-25 stainless steel AISI 304, Ø32-100 stainless steel AISI 316 |
| Piston | aluminium |
| Guide slide | PBT+PTFE |
| Piston rod | stainless steel AISI 316 |
| Piston seal | polyurethane |
| Guide bush for piston rod | technopolymer |
| Magnet | Ø20÷50 neodimio, Ø63÷100 plastoferrite |
| O-Ring | nitrile rubber (NBR) |
| Tie-rods | stainless steel AISI 316 |

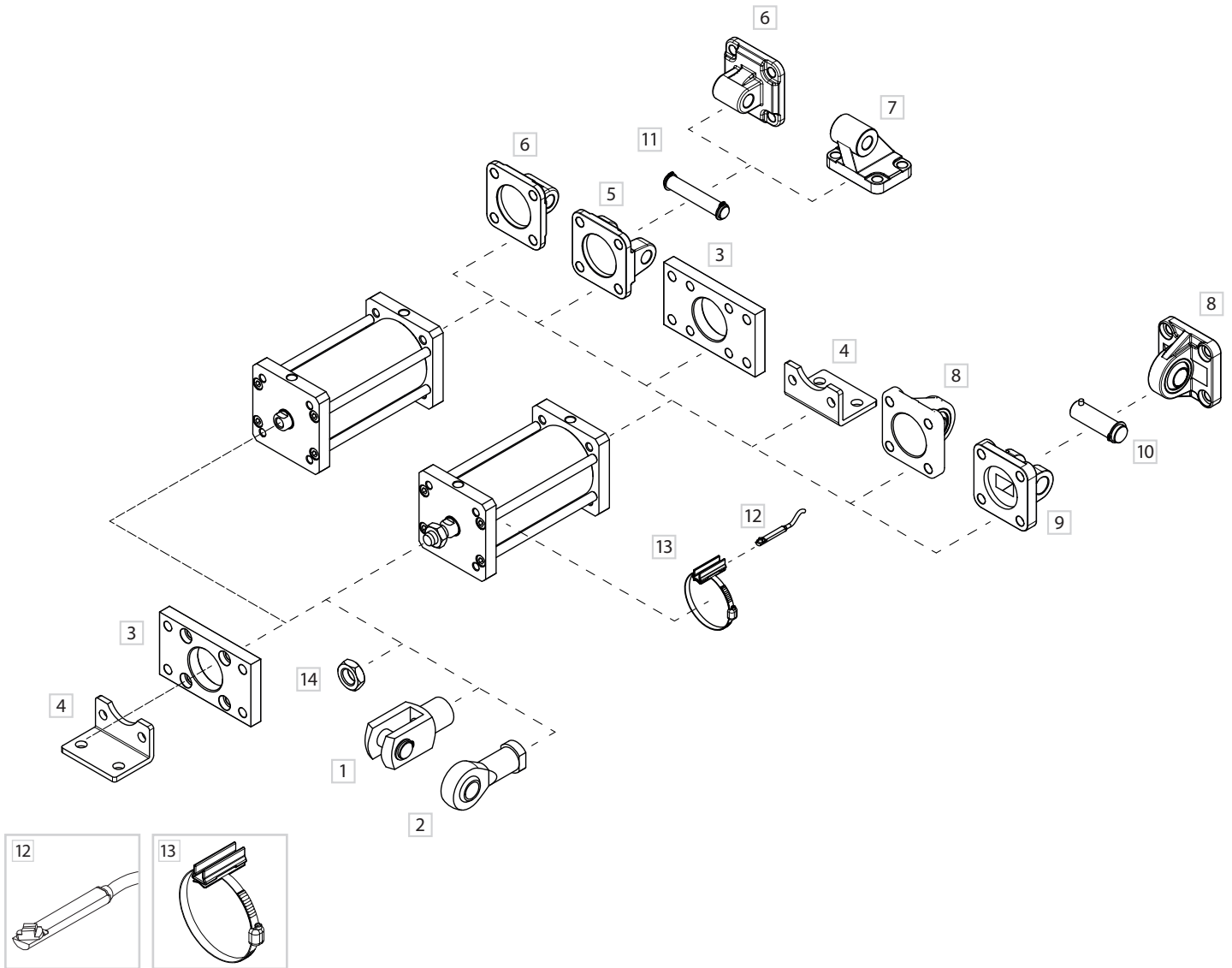
CODIFICATION KEY

| | | | | | | | | | | | | | | |
|---|---|---|---|---|---|---|---|---|---|---|---|---|---|--|
| P | R | M | 3 | 0 | 0 | 0 | 3 | 2 | 0 | 0 | 2 | 5 | M | |
| 1 | 2 | 3 | 4 | 5 | | | 6 | 7 | | | | | | |

| 1 Series | 2 Type | 3 Version | 4 Bore (mm) |
|--|--|---|---|
| PRM = Ø 20 ÷ 100 mm - ISO 21287 Stainless steel compact pneumatic cylinders | 1 = Female piston rod 3 = Male piston rod | 00 = D.A. Standard 01 = D.A. Through piston rod 60 = S.A. Retracted piston rod 70 = S.A. Extended piston rod D.A. = Double acting S.A. = Single acting | 020 = Ø20 050 = Ø50 025 = Ø25 063 = Ø63 032 = Ø32 080 = Ø80 040 = Ø40 100 = Ø100 |
| 5 Stroke (mm) | 6 Magnetic | 7 ATEX option | |
| 0010 = 10 0100 = 100 0250 = 250 0025 = 25 0125 = 125 0300 = 300 0050 = 50 0160 = 160 0350 = 350 0075 = 75 0200 = 200 0400 = 400 | M = Magnetic version (standard supplied) | X = Atex (upon request) See ATEX Catalogue for types and versions | |

Version with high temperature seals (Max 150°C) available upon request.

Fixing elements and accessories

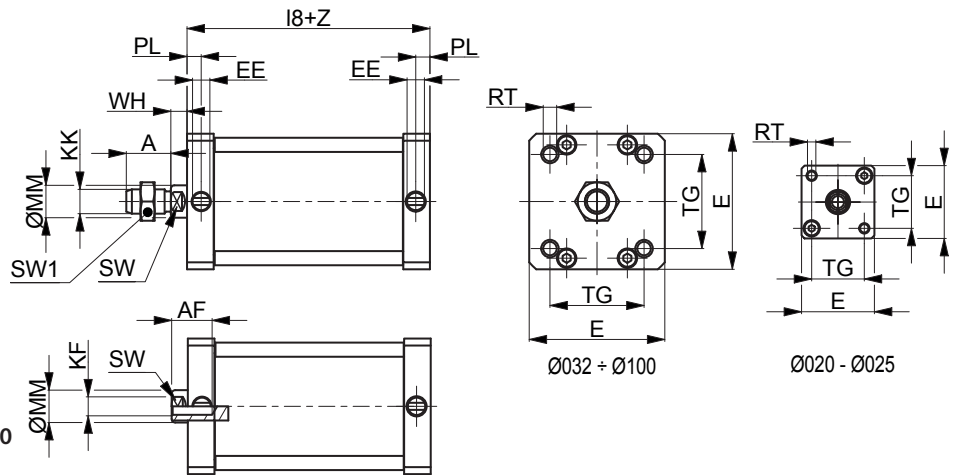


| DESCRIPTION | NOTE | PART NO. |
|--|-----------------|----------------|
| 1 Female fork with pin | Stainless steel | KF-15 __ _PI |
| 2 Articulated self-lubricating fork | Stainless steel | KF-17 __ _I |
| 3 Front/rear flange (ISO MF1-MF2) | Stainless steel | KF-12 __ _I |
| 4 Angle bracket (ISO MS1) | Stainless steel | KF-13 __ _I |
| 5 Female hinge (ISO MP2) | Stainless steel | KF-10 __ _AI |
| 6 Rear male hinge (ISO MP4) | Stainless steel | KF-11 __ _I |
| 7 Counter hinge 90° (CETOP RP107P) | Stainless steel | KF-19 __ _CTAI |
| 8 Articulated rear male hinge (ISO MP6) | Stainless steel | KF-11 __ _SI |
| 9 Narrow female hinge with pin (DIN648K) | Stainless steel | KF-10 __ _ASI/ |
| 10 Narrow hinge pin (DIN648K) | Stainless steel | KF-18S I |
| 11 Female hinge pin (ISO MS1) | Stainless steel | KF-18 _I |
| 12 DF sensor | - | DF-P700L06 |
| 13 DF bracket and adapter | Stainless steel | DH-P __ _DFI |
| 14 Piston rod nut | Stainless steel | KF-16 __ _I |

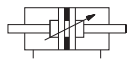
Double acting



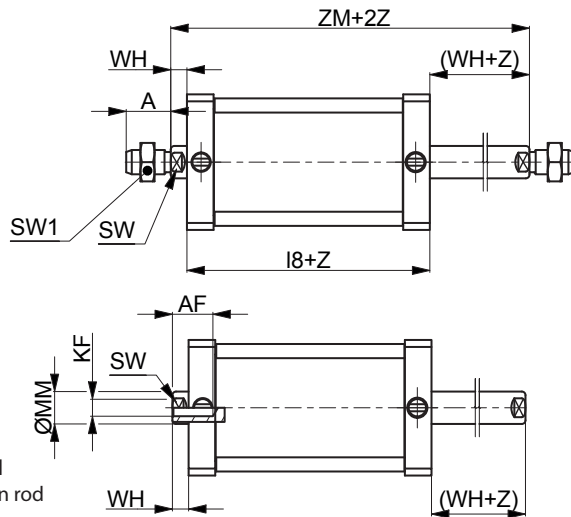
PRM100/PRM300
D.A. Standard



Double acting through piston rod



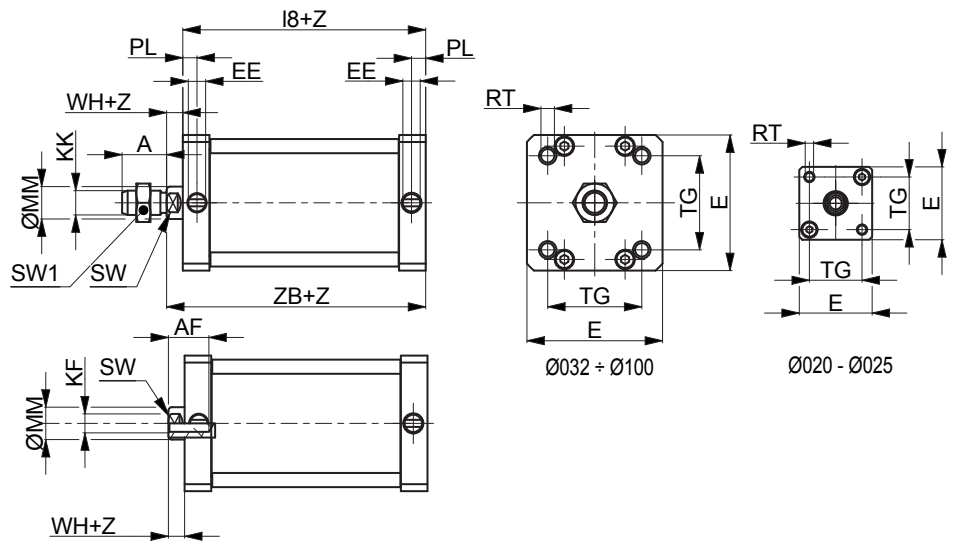
PRM101/PRP301
D.A. Through piston rod



Z= Stroke

| Ø | A | AF | KF | E+0,5 | KK | I8 | PL | RT | SW | TG | WH | ØMM | EE | SW1 | ZM | | |
|-----|----|----|-----|-------|----------|----|------|-----|-----|----|------|------|-----|-----|--------|----|------|
| 20 | 16 | 10 | M6 | 32 | M8 | 37 | ±0,3 | 6 | M5 | 8 | 22 | ±0,3 | 6,5 | 10 | M5x0,8 | 13 | 43,5 |
| 25 | 16 | 10 | M6 | 36 | M8 | 39 | ±0,3 | 6 | M5 | 8 | 26 | ±0,3 | 6 | 10 | M5x0,8 | 13 | 45 |
| 32 | 19 | 12 | M8 | 50 | M10x1,25 | 44 | ±0,4 | 7 | M6 | 10 | 32,5 | ±0,5 | 6,5 | 12 | G1/8 | 17 | 50,5 |
| 40 | 19 | 12 | M8 | 57 | M10x1,25 | 45 | ±0,7 | 7 | M6 | 10 | 38 | ±0,6 | 7 | 12 | G1/8 | 17 | 52 |
| 50 | 22 | 16 | M10 | 67 | M12x1,25 | 45 | ±0,7 | 7 | M8 | 13 | 46,5 | ±0,7 | 8 | 16 | G1/8 | 19 | 53 |
| 63 | 22 | 16 | M10 | 80 | M12x1,25 | 49 | ±0,8 | 7 | M8 | 13 | 56,5 | ±0,7 | 8 | 16 | G1/8 | 19 | 57 |
| 80 | 28 | 20 | M12 | 96 | M16x1,5 | 54 | ±0,8 | 7,5 | M10 | 17 | 72 | ±0,7 | 10 | 20 | G1/8 | 24 | 64 |
| 100 | 28 | 20 | M12 | 116 | M16x1,5 | 67 | ±1 | 7,5 | M10 | 22 | 89 | ±1,1 | 10 | 25 | G1/8 | 24 | 77 |

Single acting retracted piston rod

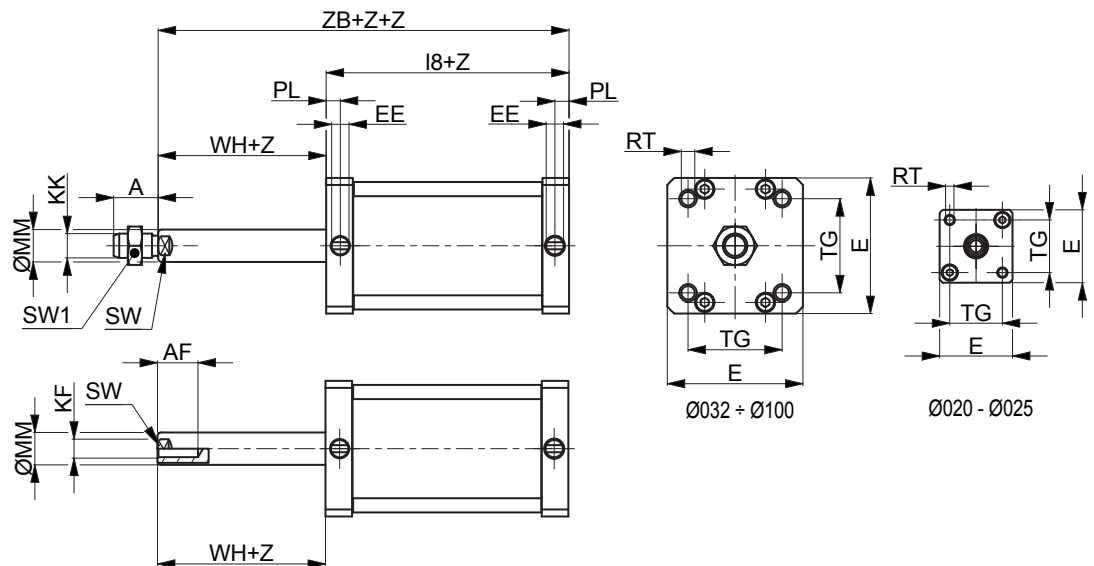


PRM160/PRM360
S.A. Retracted piston rod

Z= Stroke

| Ø | A | AF | KF | E+0,5 | KK | I8 | PL | RT | SW | TG | WH | ØMM | EE | SW1 | ZB | | |
|-----|----|----|-----|-------|----------|----|------|-----|-----|----|------|------|-----|-----|--------|----|------|
| 20 | 16 | 10 | M6 | 32 | M8 | 47 | ±0,3 | 6 | M5 | 8 | 22 | ±0,3 | 6,5 | 10 | M5x0,8 | 13 | 53,5 |
| 25 | 16 | 10 | M6 | 36 | M8 | 49 | ±0,3 | 6 | M5 | 8 | 26 | ±0,3 | 6 | 10 | M5x0,8 | 13 | 55 |
| 32 | 19 | 12 | M8 | 50 | M10x1,25 | 44 | ±0,4 | 7 | M6 | 10 | 32,5 | ±0,5 | 6,5 | 12 | G1/8 | 17 | 50,5 |
| 40 | 19 | 12 | M8 | 57 | M10x1,25 | 45 | ±0,7 | 7 | M6 | 10 | 38 | ±0,6 | 7 | 12 | G1/8 | 17 | 52 |
| 50 | 22 | 16 | M10 | 67 | M12x1,25 | 45 | ±0,7 | 7 | M8 | 13 | 46,5 | ±0,7 | 8 | 16 | G1/8 | 19 | 53 |
| 63 | 22 | 16 | M10 | 80 | M12x1,25 | 49 | ±0,8 | 7 | M8 | 13 | 56,5 | ±0,7 | 8 | 16 | G1/8 | 19 | 57 |
| 80 | 28 | 20 | M12 | 96 | M16x1,5 | 54 | ±0,8 | 7,5 | M10 | 17 | 72 | ±0,7 | 10 | 20 | G1/8 | 24 | 64 |
| 100 | 28 | 20 | M12 | 116 | M16x1,5 | 67 | ±1 | 7,5 | M10 | 22 | 89 | ±1,1 | 10 | 25 | G1/8 | 24 | 77 |

Single acting extended piston rod

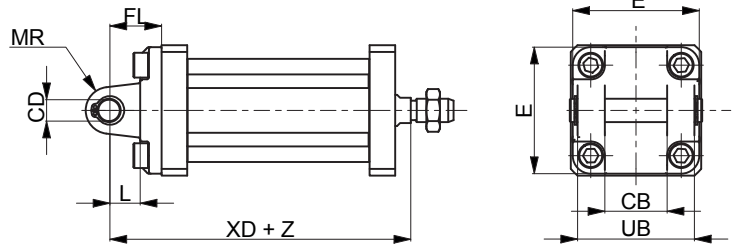
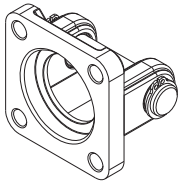


PRM170/PRM370
S.A. Extended piston rod

Z= Stroke

| Ø | A | AF | KF | E+0,5 | KK | I8 | PL | RT | SW | TG | WH | ØMM | EE | SW1 | ZB | | |
|-----|----|----|-----|-------|----------|----|------|-----|-----|----|------|------|-----|-----|--------|----|------|
| 20 | 16 | 10 | M6 | 32 | M8 | 47 | ±0,3 | 6 | M5 | 8 | 22 | ±0,3 | 6,5 | 10 | M5x0,8 | 13 | 53,5 |
| 25 | 16 | 10 | M6 | 36 | M8 | 49 | ±0,3 | 6 | M5 | 8 | 26 | ±0,3 | 6 | 10 | M5x0,8 | 13 | 55 |
| 32 | 19 | 12 | M8 | 50 | M10x1,25 | 44 | ±0,4 | 7 | M6 | 10 | 32,5 | ±0,5 | 6,5 | 12 | G1/8 | 17 | 50,5 |
| 40 | 19 | 12 | M8 | 57 | M10x1,25 | 45 | ±0,7 | 7 | M6 | 10 | 38 | ±0,6 | 7 | 12 | G1/8 | 17 | 52 |
| 50 | 22 | 16 | M10 | 67 | M12x1,25 | 45 | ±0,7 | 7 | M8 | 13 | 46,5 | ±0,7 | 8 | 16 | G1/8 | 19 | 53 |
| 63 | 22 | 16 | M10 | 80 | M12x1,25 | 49 | ±0,8 | 7 | M8 | 13 | 56,5 | ±0,7 | 8 | 16 | G1/8 | 19 | 57 |
| 80 | 28 | 20 | M12 | 96 | M16x1,5 | 54 | ±0,8 | 7,5 | M10 | 17 | 72 | ±0,7 | 10 | 20 | G1/8 | 24 | 64 |
| 100 | 28 | 20 | M12 | 116 | M16x1,5 | 67 | ±1 | 7,5 | M10 | 22 | 89 | ±1,1 | 10 | 25 | G1/8 | 24 | 77 |

Female hinge (ISO MP2) with pin

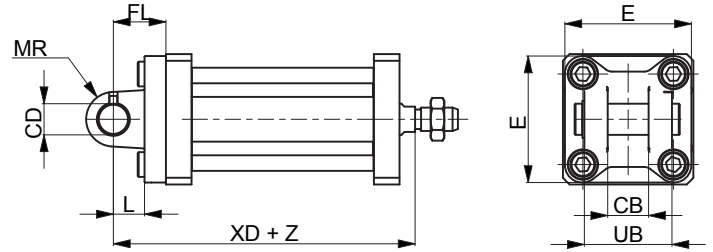
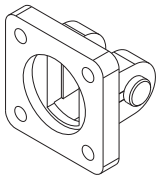


Material: Stainless steel AISI 304

Z = Stroke

| Ø | CB | CD | E | FL ± 0,2 | L min | MR Max | UB h14 | XD | | Part no. |
|-----|-----|----|-----|-------------|----------|-----------|-----------|------|-------|------------|
| | H14 | H9 | | | | | | | | |
| 20 | - | - | - | - | - | - | - | - | - | - |
| 25 | - | - | - | - | - | - | - | - | - | - |
| 32 | 26 | 10 | 48 | 22 | 12 | 11 | 45 | 62,5 | ±1,25 | KF-10032AI |
| 40 | 28 | 12 | 54 | 25 | 15 | 13 | 52 | 67 | ±1,25 | KF-10040AI |
| 50 | 32 | 12 | 65 | 27 | 15 | 13 | 60 | 68 | ±1,25 | KF-10050AI |
| 63 | 40 | 16 | 75 | 32 | 20 | 17 | 70 | 77 | ±1,6 | KF-10063AI |
| 80 | 50 | 16 | 95 | 36 | 20 | 17 | 90 | 84 | ±1,6 | KF-10080AI |
| 100 | 60 | 20 | 115 | 41 | 25 | 21 | 110 | 102 | ±1,6 | KF-10100AI |

Narrow female hinge with pin (DIN648K)

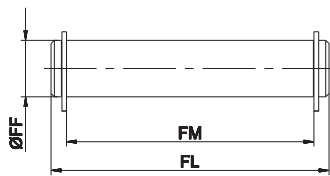


Material: Stainless steel AISI 316

Z = Stroke

| Ø | CB | CD | E | FL ± 0,2 | L min | MR Max | UB h14 | XD | | Part no. |
|-----|-----|----|-----|-------------|----------|-----------|-----------|------|-------|-------------|
| | H14 | H9 | | | | | | | | |
| 20 | - | - | - | - | - | - | - | - | - | - |
| 25 | - | - | - | - | - | - | - | - | - | - |
| 32 | 14 | 10 | 45 | 22 | 10 | 10 | 34 | 60,5 | ±1,25 | KF-10032ASI |
| 40 | 16 | 12 | 52 | 25 | 16 | 12 | 40 | 68 | ±1,25 | KF-10040ASI |
| 50 | 21 | 16 | 65 | 27 | 16 | 14 | 45 | 69 | ±1,5 | KF-10050ASI |
| 63 | 21 | 16 | 75 | 32 | 21 | 18 | 51 | 78 | ±1,6 | KF-10063ASI |
| 80 | 25 | 20 | 95 | 36 | 22 | 20 | 65 | 86 | ±1,6 | KF-10080ASI |
| 100 | 25 | 20 | 115 | 41 | 27 | 22 | 75 | 104 | ±1,6 | KF-10100ASI |

Female hinge pin

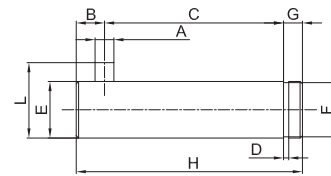


Including 2 circlips

Material: Stainless steel AISI 304

| Ø | FF | FL | FM | Part no. |
|-----|----|-------|-----|-----------|
| | f8 | | | |
| 20 | - | - | - | - |
| 25 | - | - | - | - |
| 32 | 10 | 53 | 46 | KF-18032I |
| 40 | 12 | 61,3 | 53 | KF-18040I |
| 50 | 12 | 69 | 61 | KF-18050I |
| 63 | 16 | 80,5 | 71 | KF-18063I |
| 80 | 16 | 100,5 | 91 | KF-18080I |
| 100 | 20 | 122,5 | 111 | KF-18100I |

Narrow female hinge pin

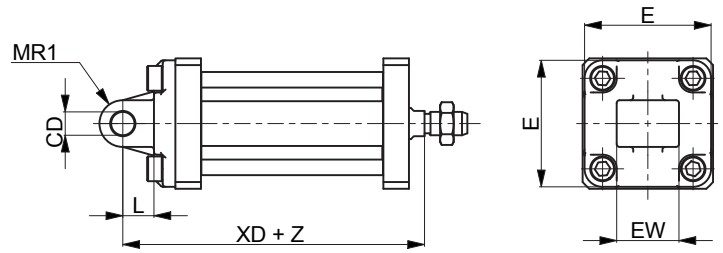
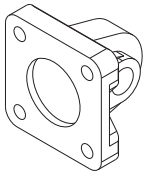


Including 2 circlips

Material: Stainless steel AISI 316

| Ø | A | C | D | E | F | G | H | L | B | Part no. |
|-----|-----|--|-----|----|------|---|----|---|-----|---------------|
| | H12 | $\begin{smallmatrix} +0,5 \\ -0,3 \end{smallmatrix}$ | h13 | f7 | h11 | | | $\begin{smallmatrix} 0 \\ -0,5 \end{smallmatrix}$ | | |
| 20 | - | - | - | - | - | - | - | - | - | - |
| 25 | - | - | - | - | - | - | - | - | - | - |
| 32 | 3 | 32,5 | 1,1 | 10 | 9,6 | 4 | 41 | 14 | 4,5 | KF-18032SI |
| 40 | 4 | 38 | 1,1 | 12 | 11,5 | 4 | 48 | 16 | 6 | 0 KF-18040SI |
| 50 | 4 | 43 | 1,1 | 16 | 15,2 | 5 | 54 | 20 | 6 | -1 KF-18050SI |
| 63 | 4 | 49 | 1,1 | 16 | 15,2 | 5 | 60 | 20 | 6 | KF-18063SI |
| 80 | 4 | 63 | 1,3 | 20 | 19 | 6 | 75 | 24 | 6 | KF-18080SI |
| 100 | 4 | 73 | 1,3 | 20 | 19 | 6 | 85 | 24 | 6 | KF-18100SI |

Rear male hinge (ISO MP4)



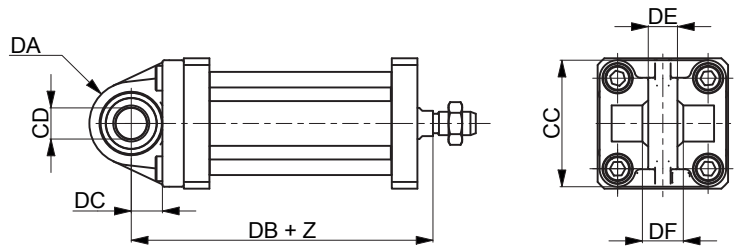
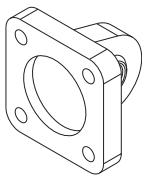
Material: Stainless steel AISI 304

| Ø | CD | E | EW | | L | MR1 | XD | | Part no. |
|-----|----|-----|----|-----------|-----|-------|------|-------|-----------|
| | H9 | | | | min | | | | |
| 20 | - | - | - | - | - | - | - | - | - |
| 25 | - | - | - | - | - | - | - | - | - |
| 32 | 10 | 48 | 26 | -0,2/-0,6 | 12 | 15* | 62,5 | ±1,25 | KF-11032I |
| 40 | 12 | 54 | 28 | -0,2/-0,6 | 15 | 18* | 67 | ±1,25 | KF-11040I |
| 50 | 12 | 65 | 32 | -0,2/-0,6 | 15 | 20* | 68 | ±1,25 | KF-11050I |
| 63 | 16 | 75 | 40 | -0,2/-0,6 | 20 | 23* | 77 | ±1,6 | KF-11063I |
| 80 | 16 | 95 | 50 | -0,2/-0,6 | 20 | 27* | 84 | ±1,6 | KF-11080I |
| 100 | 20 | 115 | 60 | -0,2/-0,6 | 25 | 29,5* | 102 | ±1,6 | KF-11100I |

* = Non-standard dimension

Articulated rear male hinge (ISO MP6)

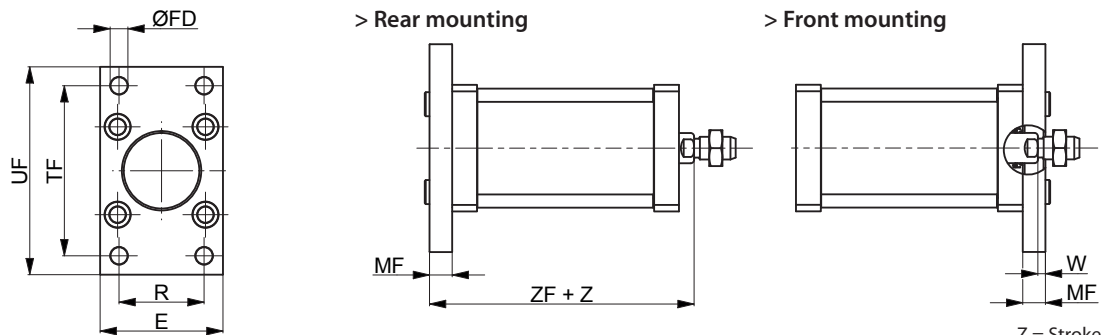
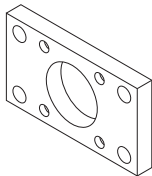
1



Material: Stainless steel AISI 316

| Ø | CC | CD | DA | DB | DC | DE | DF | Part no. |
|-----|-----|----|------|------|------|------|----|------------|
| | | H9 | | | | | | |
| 20 | - | - | - | - | - | - | - | - |
| 25 | - | - | - | - | - | - | - | - |
| 32 | 48 | 10 | 15 | 64 | 14 | 10,5 | 14 | KF-11032SI |
| 40 | 54 | 12 | 18 | 68,5 | 16,5 | 12 | 16 | KF-11040SI |
| 50 | 65 | 12 | 20 | 70,5 | 17,5 | 12 | 16 | KF-11050SI |
| 63 | 75 | 16 | 21 | 78,5 | 21,5 | 15 | 21 | KF-11063SI |
| 80 | 95 | 16 | 27 | 88 | 24 | 15 | 21 | KF-11080SI |
| 100 | 115 | 20 | 29,5 | 105 | 28 | 18 | 25 | KF-11100SI |

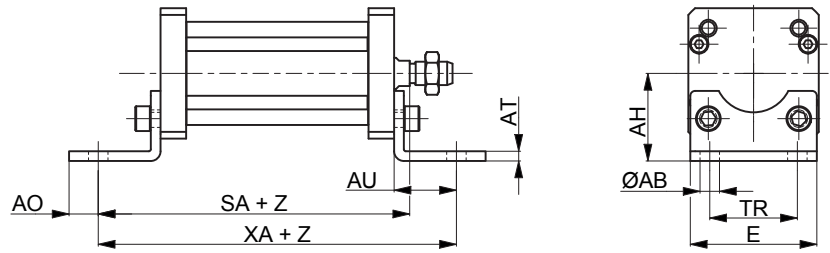
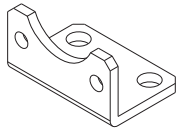
Front/rear flange (ISO MF1-MF2)



Material: Stainless steel AISI 304

| Ø | E | FB | MF | R | TF | UF | W | | ZF | | Part no. |
|-----|-----|-----|-------|------|------|-----|-----|------|----|-------|-----------|
| | | H13 | ± 0,2 | JS14 | JS14 | Max | | | | | |
| 20 | - | - | - | - | - | - | - | - | - | - | - |
| 25 | - | - | - | - | - | - | - | - | - | - | - |
| 32 | 45 | 7 | 10 | 32 | 64 | 80 | 3,5 | ±1,6 | 54 | ±1,25 | KF-12032I |
| 40 | 52 | 9 | 10 | 36 | 72 | 90 | 3 | ±1,6 | 55 | ±1,25 | KF-12040I |
| 50 | 65 | 9 | 12 | 45 | 90 | 110 | 4 | ±2 | 57 | ±1,25 | KF-12050I |
| 63 | 75 | 9 | 12 | 50 | 100 | 120 | 4 | ±2 | 61 | ±1,6 | KF-12063I |
| 80 | 95 | 12 | 16 | 63 | 126 | 150 | 6 | ±2 | 70 | ±1,6 | KF-12080I |
| 100 | 115 | 14 | 16 | 75 | 150 | 170 | 6 | ±2 | 83 | ±1,6 | KF-12100I |

Angle bracket (ISO MS1)

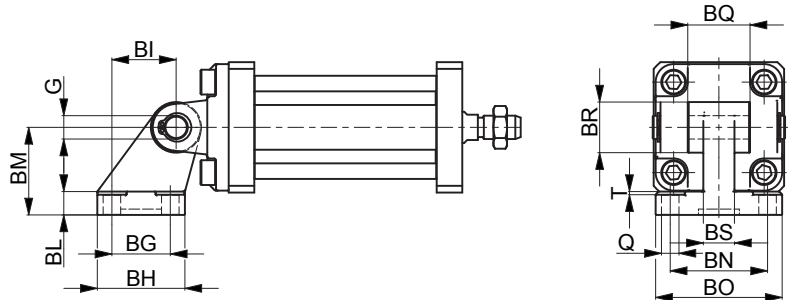
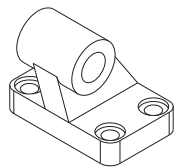


Material: Stainless steel AISI 304

Z = Stroke

| Ø | ØAB | AH | AO | AT | AU | E | SA+ | | TR | XA+ | | Part no. |
|-----|-----|------|----|----|----|-----|------|-------|-------|-------|-------|-----------|
| | H13 | JS15 | | | | | ±0,2 | JS14 | ±1,25 | ±1,25 | | |
| 20 | - | - | - | - | - | - | - | - | - | - | - | - |
| 25 | - | - | - | - | - | - | - | - | - | - | - | - |
| 32 | 7 | 32 | 6 | 4 | 24 | 45 | 74,5 | ±1,25 | 32 | 98,5 | ±1,25 | KF-13032I |
| 40 | 9 | 36 | 8 | 4 | 28 | 52 | 80 | ±1,25 | 36 | 108 | ±1,25 | KF-13040I |
| 50 | 9 | 45 | 10 | 5 | 32 | 64 | 85 | ±1,25 | 45 | 117 | ±1,25 | KF-13050I |
| 63 | 9 | 50 | 12 | 5 | 32 | 74 | 89 | ±1,6 | 50 | 121 | ±1,6 | KF-13063I |
| 80 | 12 | 63 | 15 | 6 | 41 | 94 | 105 | ±1,6 | 63 | 146 | ±1,6 | KF-13080I |
| 100 | 14 | 71 | 20 | 6 | 41 | 114 | 118 | ±1,6 | 75 | 159 | ±1,6 | KF-13100I |

Counter hinge 90° (CETOP RP107P)

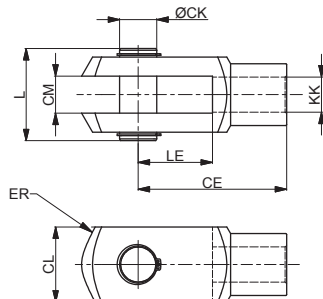
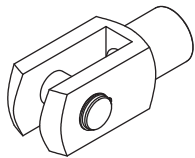


Material: Stainless steel AISI 304

| Ø | Q | BG | BH | BI | BL | BM | BN | BO | BS | BR | T | G | Part no. |
|-----|-----|------|-----|------|----|------|------|-----|-----|-----|-----|----|--------------|
| | H13 | JS14 | Max | JS14 | | JS15 | JS14 | Max | Max | Max | Max | H9 | |
| 20 | - | - | - | - | - | - | - | - | - | - | - | - | - |
| 25 | - | - | - | - | - | - | - | - | - | - | - | - | - |
| 32 | 6,6 | 18 | 31 | 21 | 8 | 32 | 38 | 51 | 10 | 20 | 1,6 | 10 | KF-19032CTAI |
| 40 | 6,6 | 22 | 35 | 24 | 10 | 36 | 41 | 54 | 15 | 22 | 1,6 | 12 | KF-19040CTAI |
| 50 | 9 | 30 | 45 | 33 | 12 | 45 | 50 | 65 | 16 | 26 | 1,6 | 12 | KF-19050CTAI |
| 63 | 9 | 35 | 50 | 37 | 14 | 50 | 52 | 67 | 16 | 30 | 1,6 | 16 | KF-19063CTAI |
| 80 | 11 | 40 | 60 | 47 | 14 | 63 | 66 | 86 | 20 | 30 | 2,5 | 16 | KF-19080CTAI |
| 100 | 11 | 50 | 70 | 55 | 17 | 71 | 76 | 96 | 20 | 38 | 2,5 | 20 | KF-19100CTAI |

1
CYLINDERS

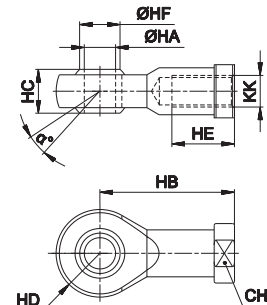
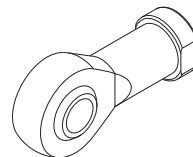
Female fork with pin



Material: Stainless steel AISI 304

| Ø | CE | CK | CL | CM | ER | KK | L | LE | Part no. |
|----------|----|----|----|-----|----|----------|----|----|------------|
| | | | | B12 | | | | | |
| 20 - 25 | 32 | 8 | 16 | 8 | 10 | M8x1,25 | 22 | 16 | MF-15020PI |
| 32 - 40 | 40 | 10 | 20 | 10 | 16 | M10x1,25 | 26 | 20 | KF-15032PI |
| 50 - 63 | 48 | 12 | 24 | 12 | 19 | M12x1,25 | 32 | 24 | KF-15040PI |
| 80 - 100 | 64 | 16 | 32 | 16 | 25 | M16x1,5 | 40 | 32 | KF-15050PI |

Articulated self-lubricating fork

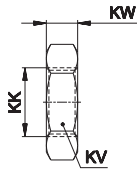


Material: Stainless steel AISI 304

| Ø | α° | CH | KK | HA | HB | HC | HD | HE | HF | Part no. |
|----------|----|----|----------|----|----|----|----|----|------|-----------|
| | | | | | | | | | | |
| 20 - 25 | 14 | 14 | M8x1,25 | 8 | 36 | 12 | 12 | 16 | 10,4 | MF-17020I |
| 32 - 40 | 13 | 17 | M10x1,25 | 10 | 43 | 14 | 14 | 20 | 12,9 | KF-17032I |
| 50 - 63 | 13 | 19 | M12x1,25 | 12 | 50 | 16 | 16 | 22 | 15,4 | KF-17040I |
| 80 - 100 | 15 | 22 | M16x1,5 | 16 | 64 | 21 | 21 | 28 | 19,3 | KF-17050I |

Fork with clip suitable for piston rod according to ISO 8140

Piston rod nut

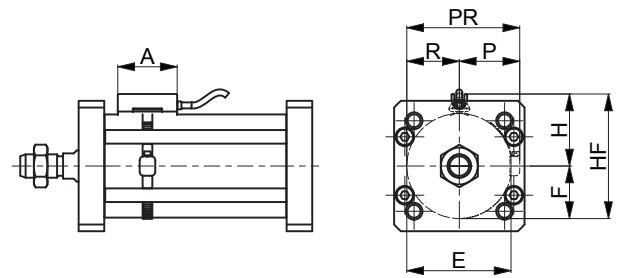
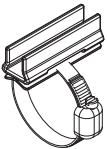


Material: Stainless steel AISI 304

| Ø | KK | KV | KW | Part no. |
|----------|----------|----|----|-----------|
| 20 - 25 | M8x1,25 | 13 | 5 | MF-16020I |
| 32 - 40 | M10x1,25 | 17 | 6 | KF-16032I |
| 50 - 63 | M12x1,25 | 19 | 7 | KF-16040I |
| 80 - 100 | M16x1,5 | 24 | 8 | KF-16050I |

DF bracket

1

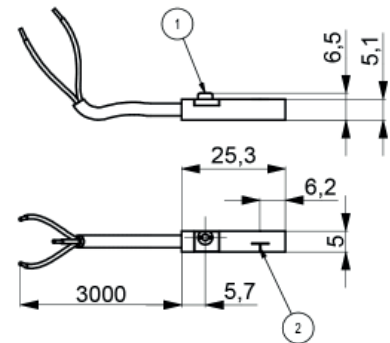
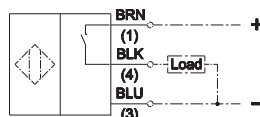
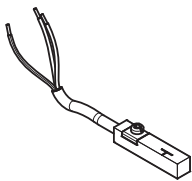


Material: Stainless steel AISI 303

| Ø | A | E | H | F | HF | P | R | PR | Part no. |
|-----|----|-------|-----|-------|-------|-----|-------|-------|---------------|
| 20 | 34 | 24 | 20 | 12 | 32 | 17 | 12 | 29 | DH-P020DFI |
| 25 | 34 | 32 | 23 | 16 | 39 | 19 | 16 | 35 | DH-P025032DFI |
| 32 | 34 | 41,5 | 53 | 16,75 | 94,5 | 47 | 41,5 | 88,5 | DH-P025032DFI |
| 40 | 34 | 51,5 | 63 | 20,75 | 114,5 | 57 | 51,5 | 108,5 | DH-P040DFI |
| 50 | 34 | 64,5 | 76 | 25,75 | 140,5 | 70 | 64,5 | 134,5 | DH-P050DFI |
| 63 | 34 | 81,5 | 93 | 32,25 | 174,5 | 87 | 81,5 | 168,5 | DH-P063DFI |
| 80 | 34 | 101,5 | 113 | 40,75 | 214,5 | 107 | 101,5 | 208,5 | DH-P080DFI |
| 100 | 34 | 126,5 | 138 | 50,75 | 264,5 | 132 | 126,5 | 258,5 | DH-P100DFI |

For DF sensors see accessories section

DF sensor



| 1 | 2 | Part no. |
|------------------|---------------------|------------|
| fixing eccentric | active sensing face | DF-P700L06 |