

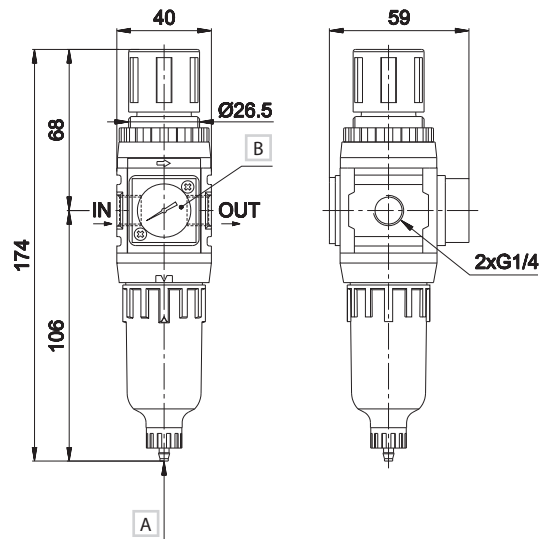
Filter regulator	Size					
	0	05		1	2	
Part no.	HZE0B08GM	HZE05B08GM	HZE05B10GM	HZE1B10GM	HZE1B15GM	HZE2B15GM
Connections	G1/4	G1/4	G3/8	G3/8	G1/2	G1/2
Filtration rating (µm)	5	5		5		5
Nominal flow rate (NI/min) ^(A)	600	1500	2000	2500	3000	4500
Max supply pressure (bar-MPa-psi)	10-1-145		10-1-145		10-1-145	
Pressure adjustment by relieving (bar)	0,5 ÷ 8,5		0,5 ÷ 8,5		0,5 ÷ 8,5	
Pressure gauge (standard supplied)	HZ9464G		HZ9464G		HZ9464G	
Pressure gauge port	G1/8 ^(B)	G1/8 ^(B)		G1/8 ^(C)		G1/8 ^(C)
Fluid	compressed air		compressed air		compressed air	
Ambient temperature (°C)	0 ÷ 60		0 ÷ 60		0 ÷ 60	
Condensation drain capacity (cm ³)	12		40		45	
Condensation drain	manual		manual		manual	
Weight (Kg)	0,21		0,41		0,65	
Mounting position	vertical		vertical		vertical	

(A) = supply pressure 7 bar, outlet pressure 5 bar - Δp 1 bar

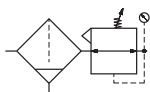
(B) = Upon request (replace HZ9464G gauge with HZE7Z480 square adaptor G1/8, to be ordered separately)

(C) = Standard supplied (replace HZ9464G gauge with HZE7Z480 square adaptor G1/8 placed on the rear side)

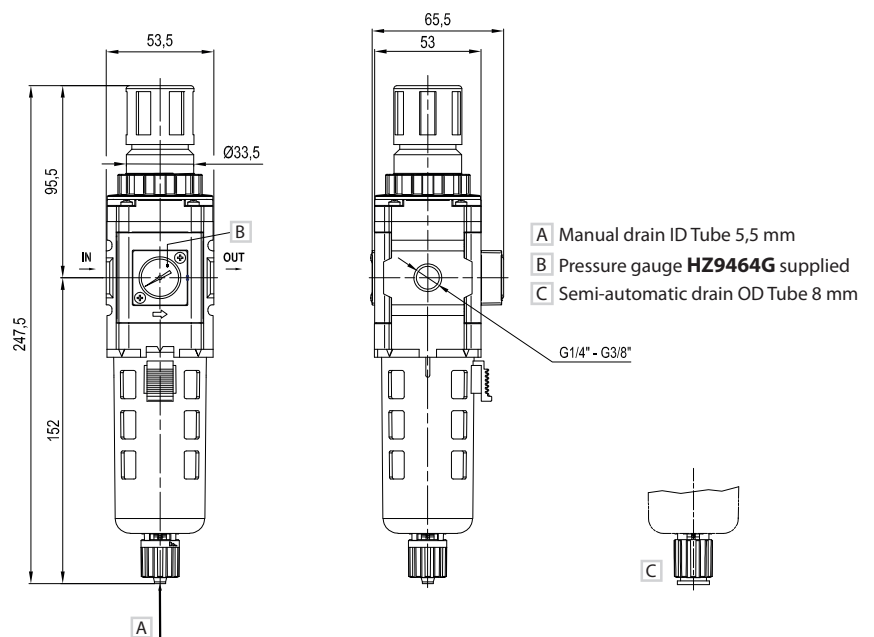
Size 0



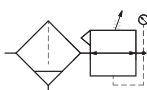
- A Manual exhaust
- B HZ9464G gauge standard supplied



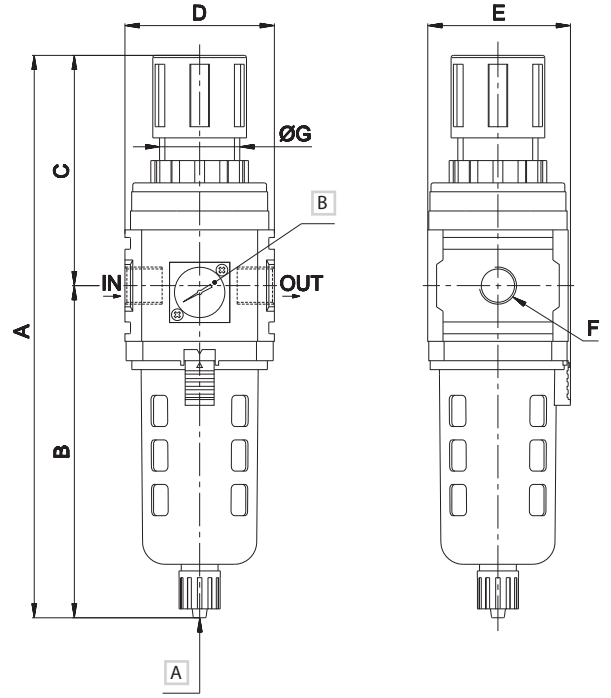
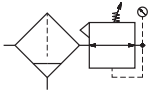
Size 05



- A Manual drain ID Tube 5,5 mm
- B Pressure gauge HZ9464G supplied
- C Semi-automatic drain OD Tube 8 mm



Size 1 - 2



A Manual exhaust
 B HZ9464G gauge standard supplied

Size	A	B	C	D	E	F	G
1	259	156	103	63	63	G3/8-G1/2	40
2	280	170	110	80	80	G1/2	47