

PM

Ø 32 ÷ 63 mm - Stainless steel pneumatic cylinders

- Stainless steel AISI 304
- Double acting versions
- Through piston rod versions
- Execution with or without magnet



TECHNICAL CHARACTERISTICS

Ambient temperature	0 ÷ 80 °C (-20°C with dry air)
Fluid	compressed air, filtered air, not lubricated
Working pressure	1 ÷ 10 bar
Bores	Ø 32 - 40 - 50 - 63 mm

CONSTRUCTIVE CHARACTERISTICS

End-caps	stainless steel AISI 304
Barrel	stainless steel AISI 304
Piston	aluminium
Guide slide	PBT+PTFE
Piston rod	stainless steel AISI 316
Piston seal	polyurethane
Guide bush for piston rod	sintered bronze
Shock absorber seals	neoprene
Magnet	plastoferrite
Nut	stainless steel AISI 304
O-Ring	nitrile rubber (NBR)

CODIFICATION KEY

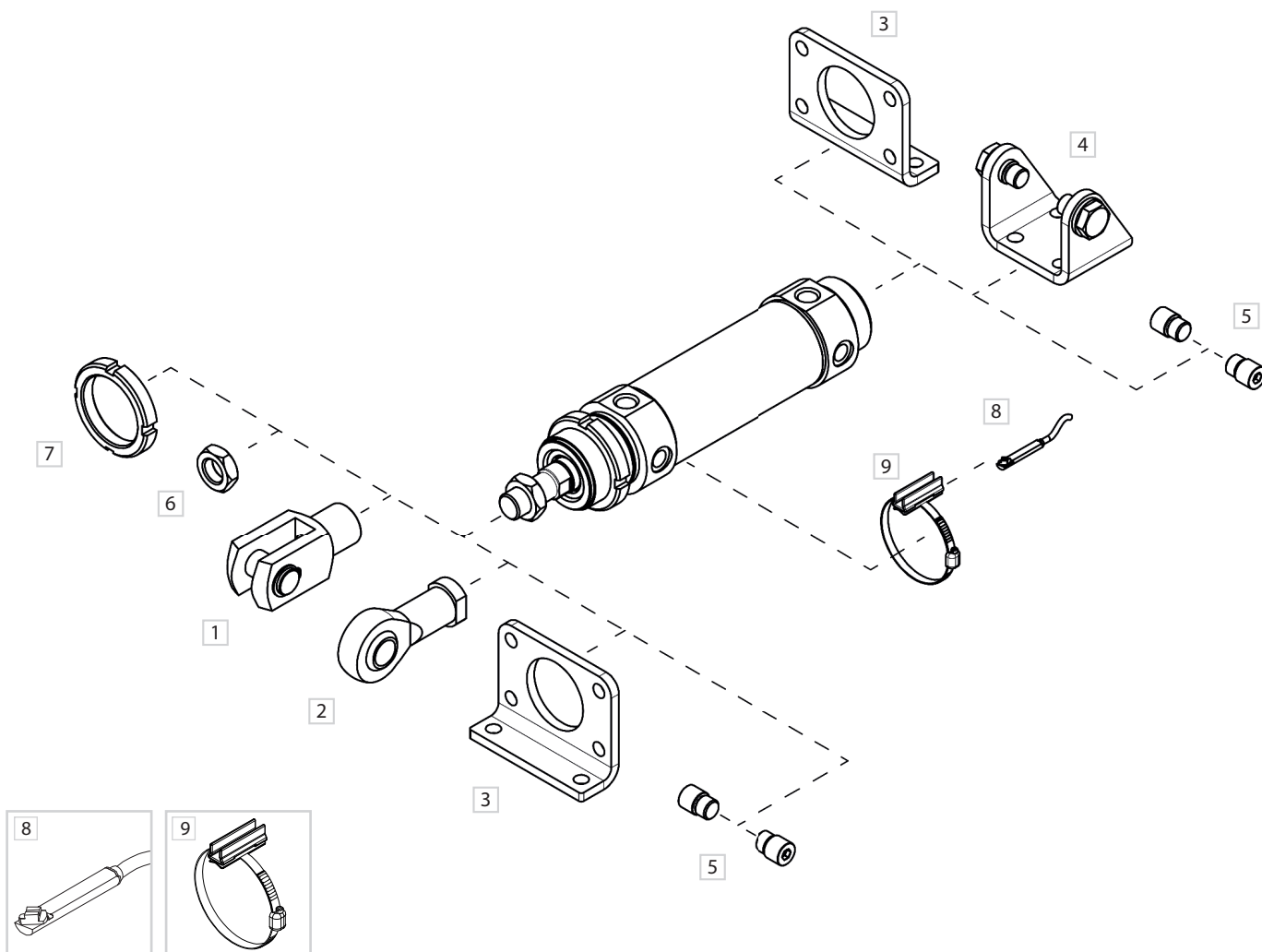
P	M	3	0	0	0	3	2	0	0	5	0	M
1	2	3	4				5			6		

1 Series	2 Type	3 Version	4 Bore (mm)
PM = Ø 32 ÷ 63 mm Stainless steel pneumatic cylinders	3 = Male piston rod	00 = D.A. Standard 01 = D.A. Through piston rod D.A. = Double acting	032 = Ø32 040 = Ø40 050 = Ø50 063 = Ø63

5 Stroke (mm)	6 Magnetic
0010 = 10 0160 = 160 0025 = 25 0200 = 200 0050 = 50 0250 = 250 0080 = 80 0320 = 320 0100 = 100 0400 = 400 0125 = 125 0500 = 500	M = Magnetic version (standard supplied)

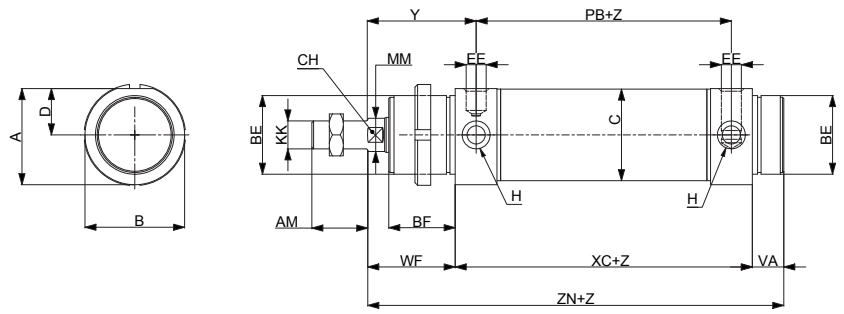
Version with high temperature seals (Max 150°C) available upon request.

Fixing elements and accessories



DESCRIPTION	NOTE	PART NO.
1 Female fork with pin	Stainless steel	MF/KF-15 __ _PI
2 Articulated self-lubricating fork	Stainless steel	MF/KF-17 __ _I
3 Angle bracket/Flange	Stainless steel	MF-13 __ _I
4 Female hinge with screws	Stainless steel	MF-21 __ _I
5 Pins (pair)	Stainless steel	MF-18 __ _I
6 Piston rod nut	Stainless steel	MF-16 __ _I
7 Nut	Stainless steel	MF-20 __ _I
8 DF sensor	-	DF-P700L06
9 DF bracket and adapter	Stainless steel	DH-P __ _DFI

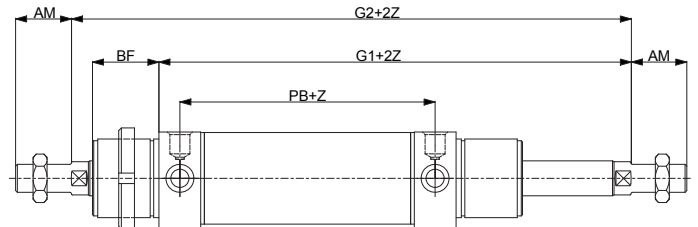
Double acting



PM300
D.A. Standard

Double acting through piston rod

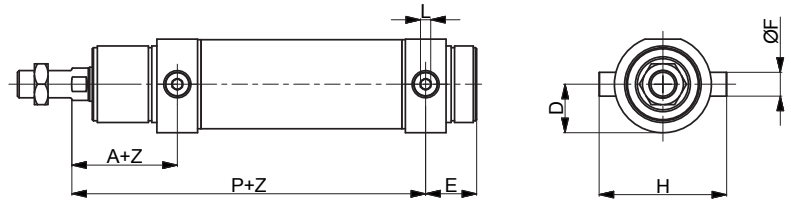
PM301
D.A. Through piston rod



Z= Stroke

Ø	A	AM	ØB	BE	BF	C	CH	D	EE	H
32	36,5	20	38	M30x1,5	30	33,6	10	17,5	G1/8	M30x1,5
40	44	24	46	M38x1,5	35	41,6	13	21	G1/4	M38x1,5
50	55	32	57	M45x1,5	38	52,4	17	26,5	G1/4	M45x1,5
63	67,5	32	70	M45x1,5	38	65,4	17	32,5	G3/8	M45x1,5
Ø	KK	ØMM	PB	VA	WF	XC	Y	ZN	G1	G2
32	M10x1,25	12	78	14	38	96	47	148	134	172
40	M12x1,25	16	89	16	45	113	57	174	158	203
50	M16x1,5	20	96	18	50	120	62	188	170	220
63	M16x1,5	20	98	18	50	124	63	192	174	224

Pins



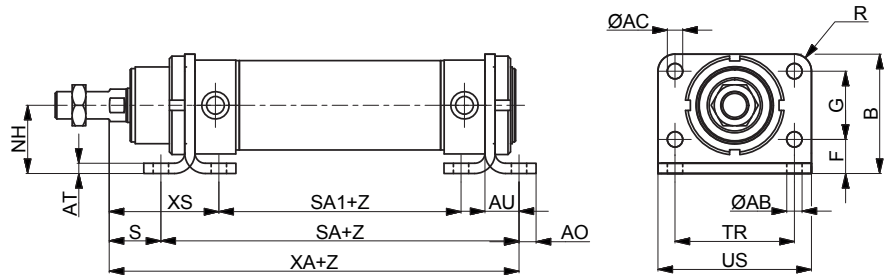
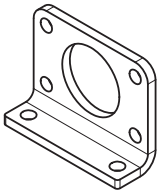
Material: Stainless steel AISI 304

Z = Stroke

Ø	A	P	E	L	D	H	ØF	Part no.
32	47	125	23	5	19	51	10	MF-18032I
40	57	146	28	6	23	61	12	MF-18040I
50	62	158	30	6	28,5	75	14	MF-18050I
63	63	161	31	8	35	92	16	MF-18063I

Angle bracket/Flange

1

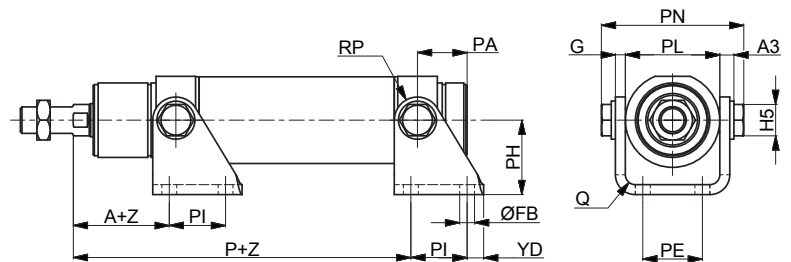
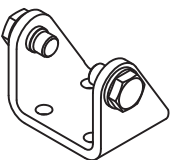


Material: Stainless steel AISI 304

Z = Stroke

Ø	NH	AT	XS	S	SA	SA1	XA	AU	AO	ØAC	R	US	TR	ØAB	F	G	B	Part no.
32	28	4	52	24	124	68	148	14	7	7	7	66	52	7	14	28	49	MF-13032I
40	33	5	65	25	153	73	178	20	10	9	10	80	60	9	18	30	58	MF-13040I
50	40	6	70	30	160	80	190	20	10	9	10	90	70	9	20	40	70	MF-13050I
63	45	6	70	30	164	84	194	20	10	9	10	96	76	9	20	50	80	MF-13063I

Female hinge with screws



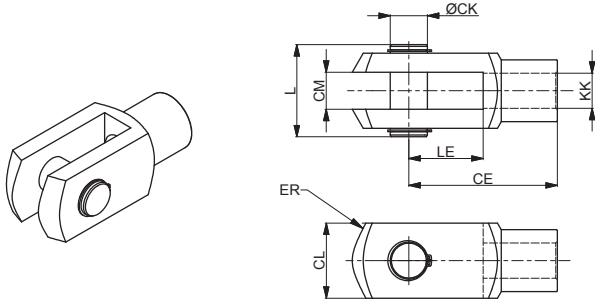
Including bolt and 2 circlips

Material: Stainless steel AISI 304

Z = Stroke

Ø	A	P	PI	ØFB	YD	PH	RP	PA	G	PN	PL	A3	H5	PE	Q	Part no.
32	45	120	24	7	8	35	12	20	4	54,1	38,1	6	13	20	4	MF-21032I
40	55	141	30	9	10	40	13	27	5	65,1	46,1	7	17	28	5	MF-21040I
50	59	152	34	9	10	45	14	30	6	80,1	57,1	8,5	19	36	6	MF-21050I
63	60	155	35	9	15	50	16	34	6	93,1	70,1	8,5	19	42	6	MF-21063I

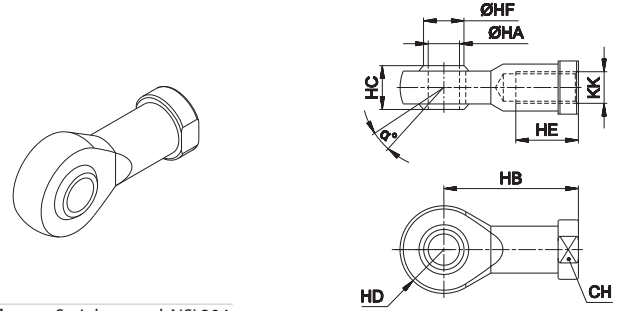
Female fork with pin



Material: Stainless steel AISI 304

Ø	CE	CK	CL	CM	ER	KK	L	LE	Part no.
32	40	10	20	10	16	M10x1,25	26	20	KF-15032PI
40	48	12	24	12	19	M12x1,25	32	24	KF-15040PI
50	64	16	32	16	25	M16x1,5	40	32	KF-15050PI
63									

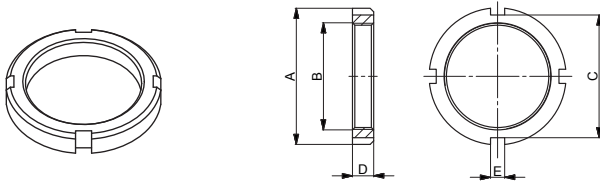
Articulated self-lubricating fork



Material: Stainless steel AISI 304

Ø	α°	CH	KK	HA	HB	HC	HD	HE	HF	Part no.
32	13	17	M10x1,25	10	43	14	14	20	12,9	KF-17032I
40	13	19	M12x1,25	12	50	16	16	22	15,4	KF-17040I
50	15	22	M16x1,5	16	64	21	21	28	19,3	KF-17050I
63										

Nut for end-cap



Material: Stainless steel AISI 304

Ø	A	B	C	D	E	Part no.
40	50	M38x1,5	46	8	5	MF-20040I
50	58	M45x1,5	52	9	6	MF-20050I
63	58	M45x1,5	52	9	6	MF-20063I

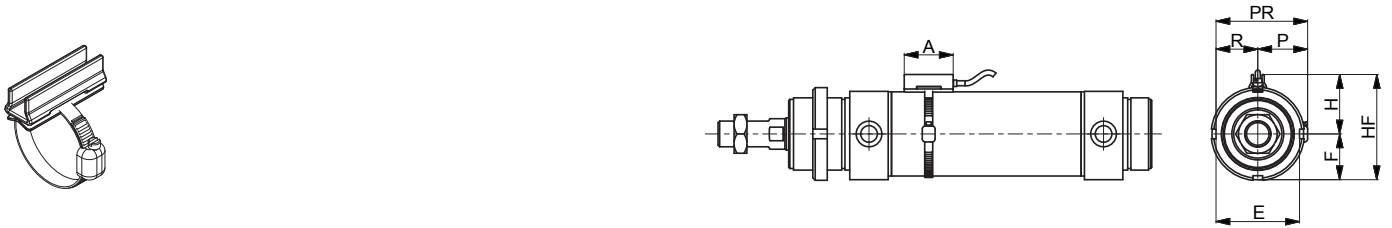
Piston rod nut



Material: Stainless steel AISI 304

Ø	KK	KV	KW	Part no.
40	M12x1,25	19	7	KF-16040I
50	M16x1,5	24	8	KF-16050I
63				

DF bracket



Material: Stainless steel AISI 303

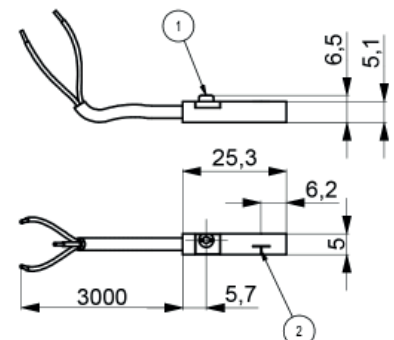
Ø	A	E	F	H	HF	P	R	PR	Part no.
40	34	41,5	20,75	53	94,5	47	41,5	88,5	DH-P040DFI
50	34	51,5	25,75	63	114,5	57	51,5	108,5	DH-P050DFI
63	34	64,5	32,25	76	140,5	70	64,5	134,5	DH-P063DFI

For DF sensors see accessories section

DF sensor



1	2	Part no.
fixing eccentric	active sensing face	DF-P700L06

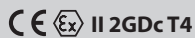


PM

Ø 16 ÷ 25 mm - ISO 6432 Stainless steel pneumatic cylinders

- Stainless steel AISI 304
- Double acting versions
- Through piston rod and adjustable cushionings versions
- Execution with or without magnet

Available ATEX version upon request



TECHNICAL CHARACTERISTICS

Ambient temperature	0 ÷ 80 °C (-20°C with dry air)
Fluid	compressed air, filtered air, not lubricated
Working pressure	1 ÷ 10 bar
Bores	Ø 16 - 20 - 25 mm

CONSTRUCTIVE CHARACTERISTICS

End-caps	stainless steel AISI 304
Barrel	stainless steel AISI 304
Piston	brass
Piston rod	stainless steel AISI 304
Piston seal	polyurethane
Guide bush for piston rod	sintered bronze
Shock absorber seals	neoprene
Magnet	plastroferrite
Nut	stainless steel AISI 304
O-Ring	nitrile rubber (NBR)

CODIFICATION KEY

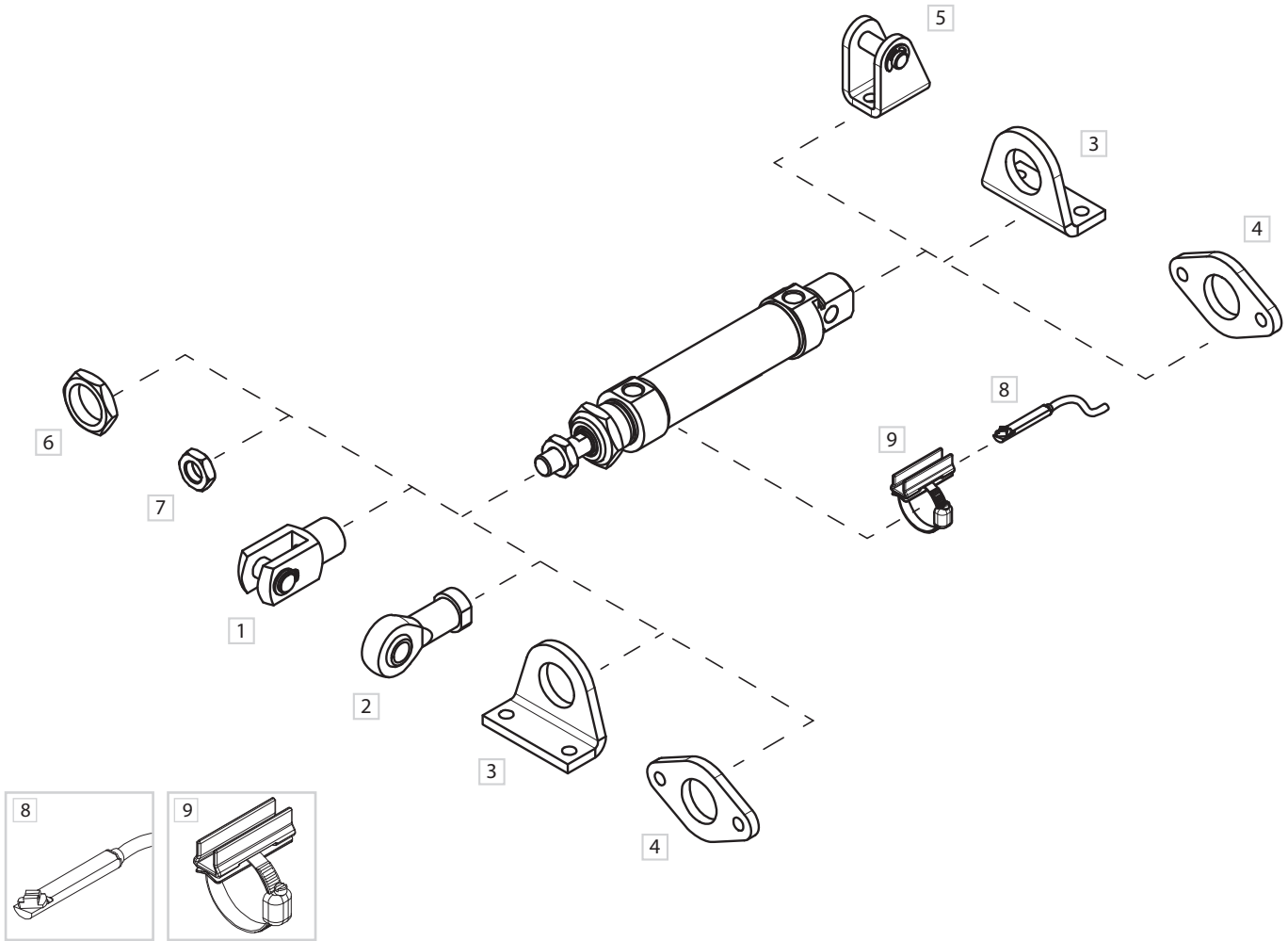
P	M	3	0	0	0	1	6	0	0	1	0	M	
1	2	3	4				5			6	7		

1 Series	2 Type	3 Version	4 Bore (mm)
PM = Ø 16 ÷ 25 mm - ISO 6432 Stainless steel pneumatic cylinders	3 = Male piston rod	00 = D.A. Standard 01 = D.A. Through piston rod 50 = D.A. With adjustable cushionings (Ø25) 51 = D.A. Through piston rod with adjustable cushionings (Ø25) D.A. = Double acting	016 = Ø16 020 = Ø20 025 = Ø25

5 Stroke (mm)	6 Magnetic	7 ATEX option
0010 = 10 0160 = 160 0025 = 25 0200 = 200 0050 = 50 0250 = 250 0080 = 80 0320 = 320 0100 = 100 0400 = 400 0125 = 125 0500 = 500	M = Magnetic version (standard supplied)	X = Atex (upon request) For types and versions please contact our Sales Office

Version with high temperature seals (Max 150°C) available upon request.

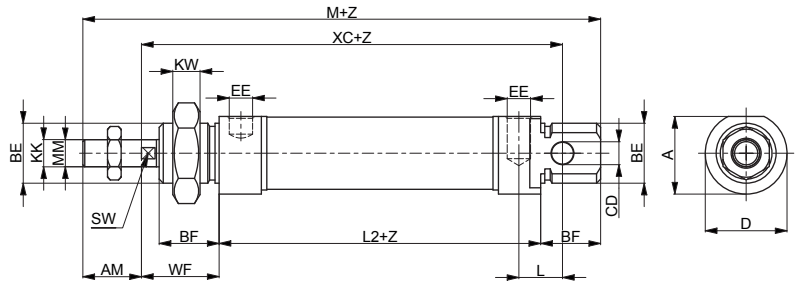
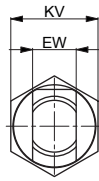
Fixing elements and accessories



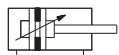
1

DESCRIPTION	NOTE	PART NO.
1 Female fork with pin	Stainless steel	MF/KF-15__PI
2 Articulated self-lubricating fork	Stainless steel	MF/KF-17__I
3 Angle bracket (MS3)	Stainless steel	MF-13__I
4 Flange (MF8)	Stainless steel	MF-12__I
5 Rear female hinge	Stainless steel	MF-21__I
6 End-cap nut	Stainless steel	MF-20__I
7 Piston rod nut	Stainless steel	MF-16__I
8 DF sensor	-	DF-P700L06
9 DF bracket and adapter	Stainless steel	DH-P__DFI

Double acting



PM300
D.A. Standard

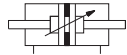


PM350
D.A. with adjusting cushionings

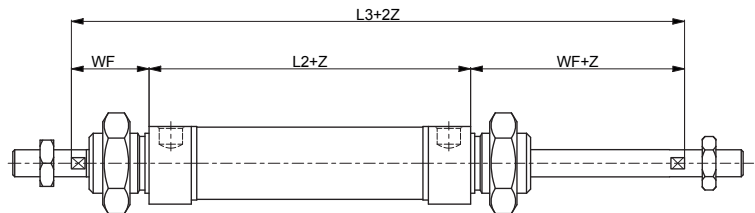
Double acting through piston rod



PM301
D.A. Through piston rod



PM351
D.A. Through piston rod
with adjustable cushionings

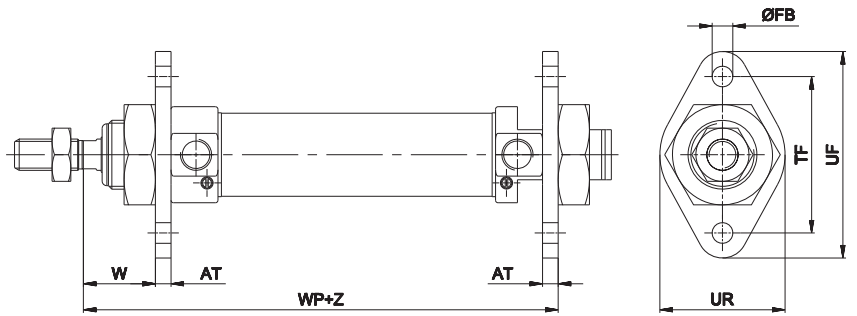
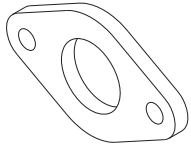


Z= Stroke

Ø	AM	A	BE	BF	CD	D	EE	EW	KK	KV
						H 9			d 13	
16	16	18	M16x1,5	18	6	19	M5x0,8	12	M6x1	22
20	20	25,5	M22x1,5	20	8	27	G1/8	16	M8x1,25	27
25	22	28,5	M22x1,5	22	8	30	G1/8	16	M10x1,25	27

Ø	KW	L	L2	L3	ØMM	M	SW	WF	XC
									± 1,2
16	8	9	53	97	6	109	5	22	82
20	11	12	67	115	8	131	7	24	95
25	11	12	68	124	10	140	9	28	104

Flange (MF8)



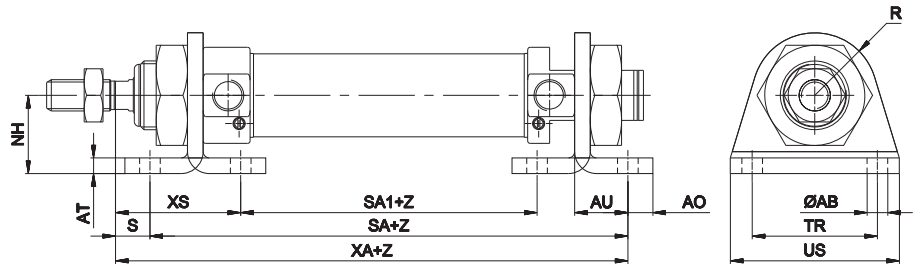
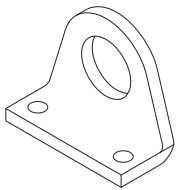
Z = Stroke

Material: Stainless steel AISI 304

Ø	AT	ØFB	TF	UF	UR	W	WP	Part no.
16	4	H13	Js14	53	30	± 1,4	79	MF-12012I
		5,5	40					
20	5	6,6	50	66	40	19	96	MF-12020I
25	5	6,6	50	66	40	23	101	

Angle bracket (MS3)

1

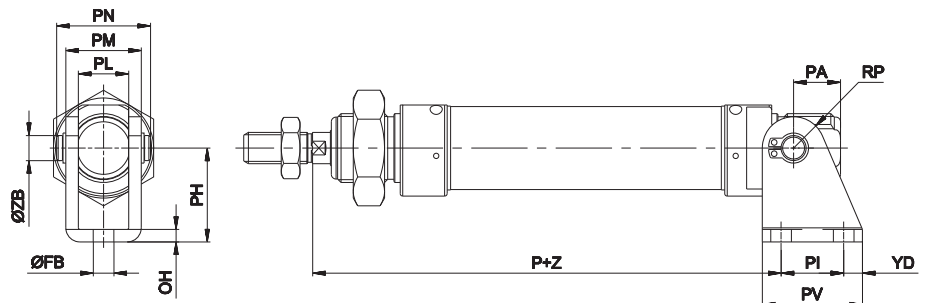
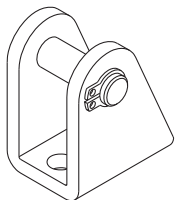


Z = Stroke

Material: Stainless steel AISI 304

Ø	AB	AO	AT	AU	NH	R	S	SA	SA1	TR	US	XA	XS	Part no.	
16	5,5	6	4	14	±0,3	±0,3	13	8	81	33	32	42	89	32	MF-13012I
20	6,6	8	5	17	25	20	7	101	43	40	54	108	36	MF-13020I	
25	6,6	8	5	17	25	20	11	102	44	40	54	113	40		

Rear female hinge



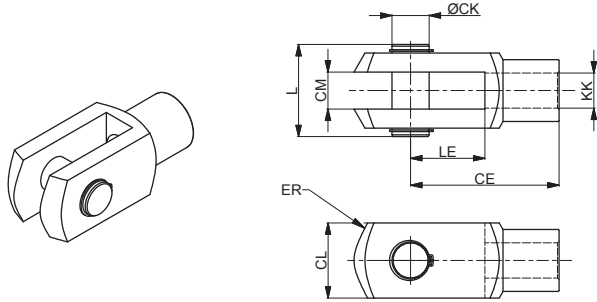
Z = Stroke

Including bolt and 2 circlips

Material: Stainless steel AISI 304

Ø	FB	OH	P	PA	PH	PI	PL	PM	PN	PV	RP	YD	ZB	Part no.
16	5,5	3	80	13	27	15	12,1	18,1	23	25	7	5	6	MF-21012I
20	6,6	4	91	16	30	20	16,1	24,1	30	32	10	6	8	MF-21020I
25	6,6	4	100	16	30	20	16,1	24,1	30	32	10	6	8	

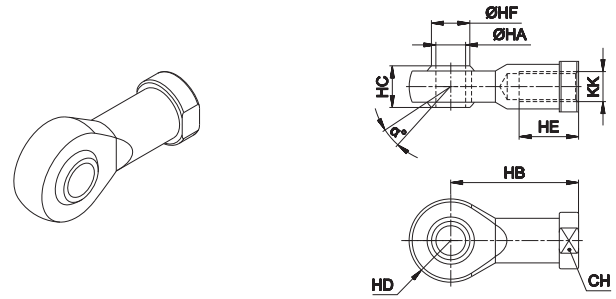
Female fork with pin



Material: Stainless steel AISI 303 (Ø16-20) 304 (Ø25)

Ø	CE	CK	CL	CM	ER	KK	L	LE	Part no.
16	24	6	12	6	7	M6x1	16	12	MF-15012PI
20	32	8	16	8	10	M8x1,25	22	16	MF-15020PI
25	40	10	20	10	16	M10x1,25	26	20	KF-15032PI

Articulated self-lubricating fork



Material: Stainless steel AISI 303 (Ø16-20) 304 (Ø25)

Ø	α°	CH	KK	HA	HB	HC	HD	HE	HF	Part no.
16	13°	11	M6x1	6	30	9	10	12	9	MF-17012I
20	14°	14	M8x1,25	8	36	12	12	16	10,4	MF-17020I
25	13°	17	M10x1,25	10	43	14	14	20	12,9	KF-17032I

Piston rod nut



Material: Stainless steel AISI 304

Ø	KK	KV	KW	Part no.
16	M6x1	10	4	MF-16012I
20	M8x1,25	13	5	MF-16020I
25	M10x1,25	17	6	KF-16032I

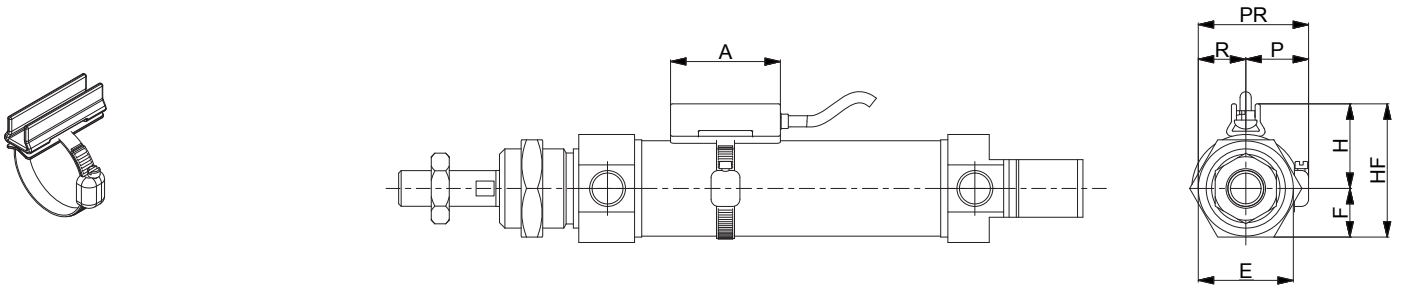
End-cap nut



Material: Stainless steel AISI 303

Ø	BE	KV1	KW1	Part no.
16	M16x1,5	24	8	MF-20012I
20	M22x1,5	32	10	MF-20020I

DF bracket

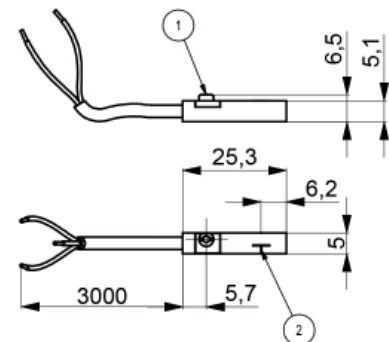


Material: Stainless steel AISI 303

Ø	A	E	F	H	HF	P	R	PR	Part no.
16	34	22	11	18	29	17	11	28	DH-P016020DFI
20	34	24	12	20	32	17	12	29	
25	34	32	16	23	39	19	16	35	DH-P025032DFI

For DF sensors see accessories section

DF sensor



1	2	Part no.
fixing eccentric	active sensing face	DF-P700L06