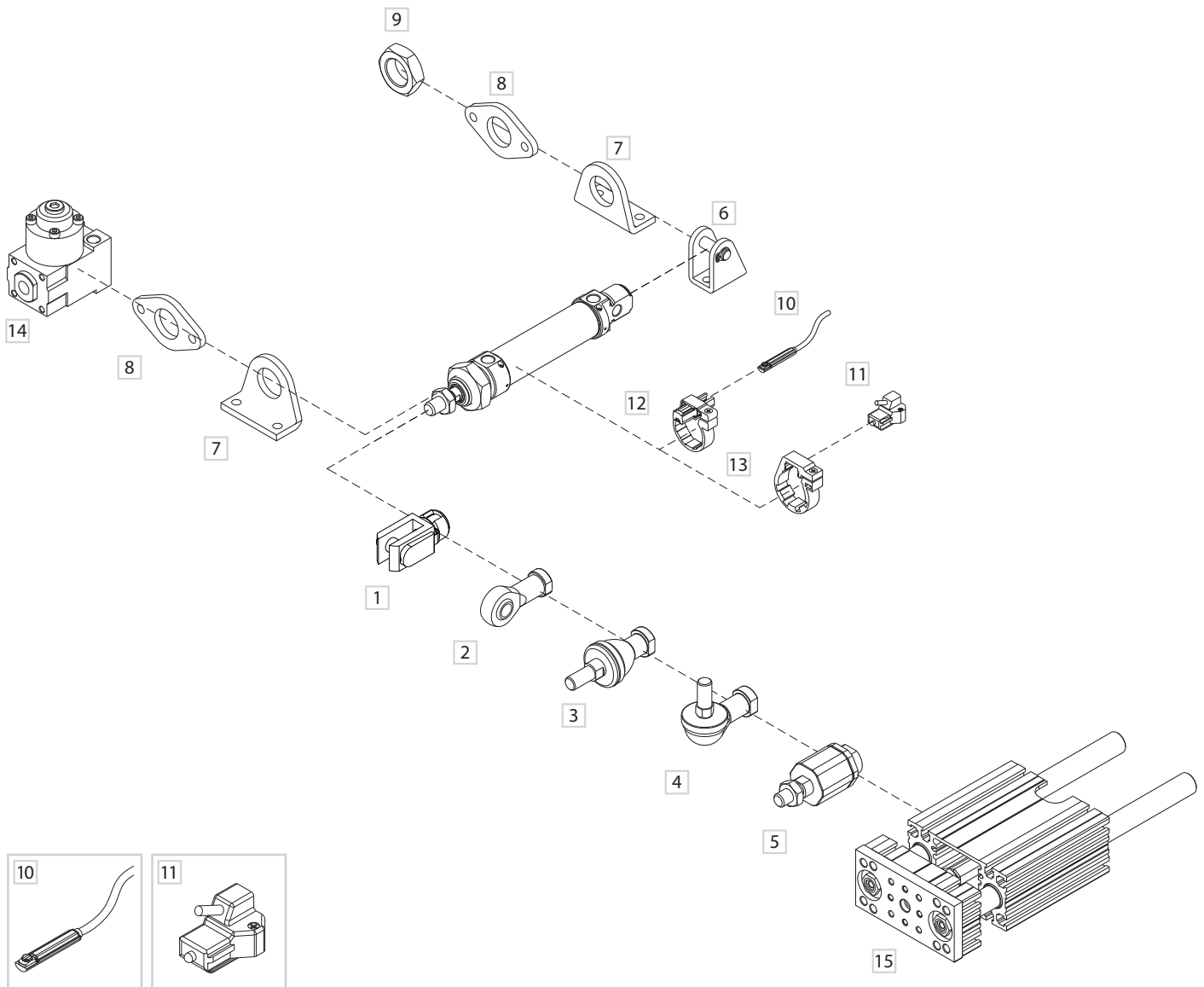
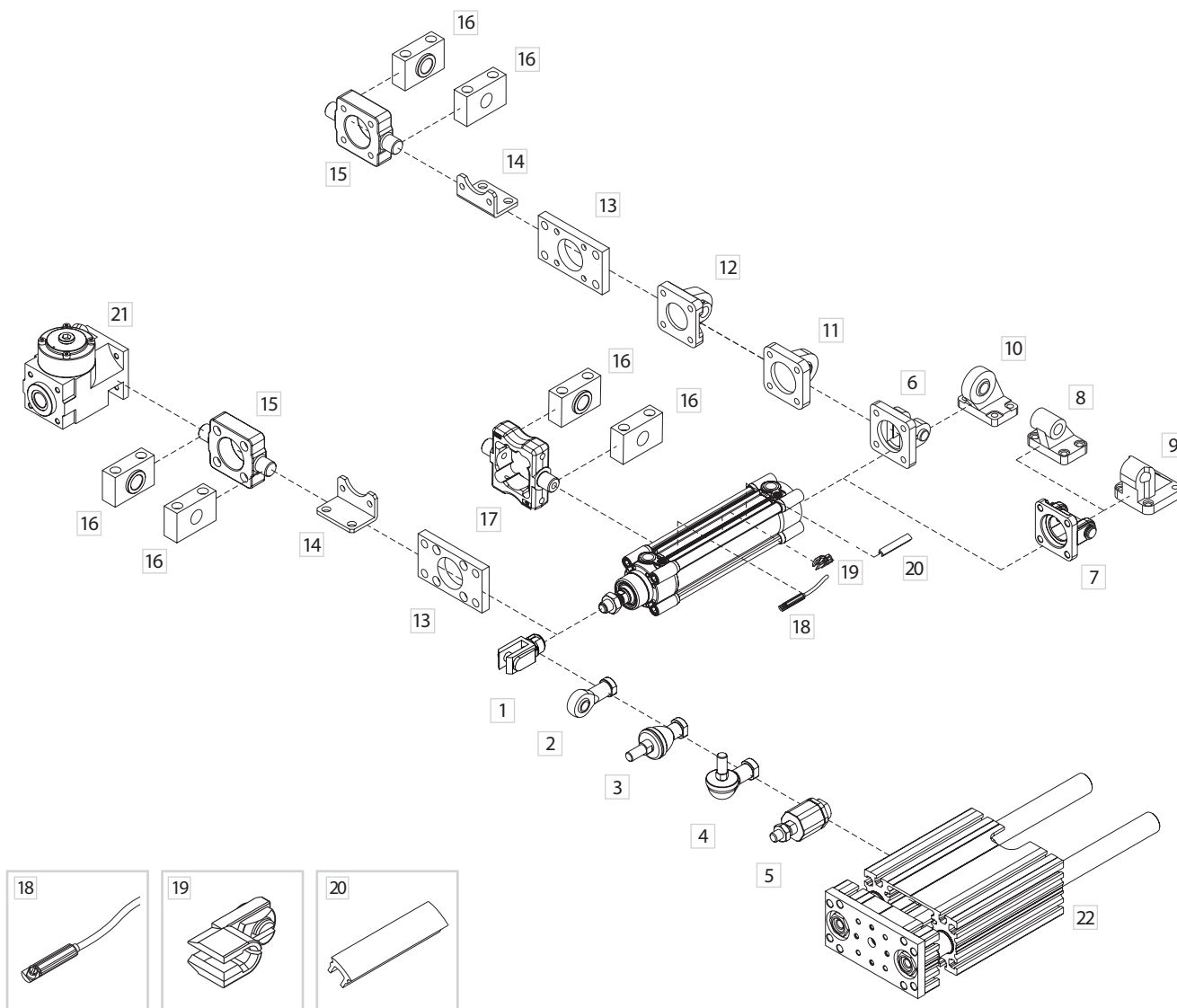


Fixing elements and accessories



DESCRIPTION	PART NO.
1 Female fork with clips	MF/KF-15_ _ _
2 Articulated self-lubricating fork	MF/KF-17_ _ _
3 Fork with axially mounted articulated pin	MF/KF-22_ _ _
4 Fork with angle mounted articulated pin	MF/KF-23_ _ _
5 Floating joint	MF/KF-24_ _ _
6 Female rear hinge	MF-21_ _ _
7 Angle bracket (MS3)	MF-13_ _ _
8 Flange (MF8)	MF-12_ _ _
9 Nut for end-cap	MF-20_ _ _
10 DF Sensor	DF- _ _ _
11 DH Sensor	DH- _ _ _
12 Holder for DF sensor	DH-M_ _DF
13 Holder for DH sensor	DH-M_ _ _
14 Locking unit	L1-N
15 Slide unit	J12

Fixing elements and accessories



DESCRIPTION	NOTE	PART NO.
1 Female fork with clips		KF-15 ___
2 Articulated self-lubricating fork		KF-17 ___
3 Fork with axially mounted articulated pin		KF-22 ___
4 Fork with angle-mounted articulated pin		KF-23 ___
5 Floating joint		KF-24 ___
6 Narrow female hinge with pin (DIN648K)		KF-10 ___ AS
7 Female hinge (ISO MP2) with pin		KF-10 ___ A
8 Counter-hinge 90° (CETOP RP107P)		KF-19 ___ CTA
9 Counter-hinge 90°		KF-19 ___
10 Articulated counter-hinge (DIN648K)		KF-19 ___ SC
11 Articulated rear male hinge (ISO MP6)		KF-11 ___ S
12 Rear male hinge (ISO MP4)		KF-11 ___
13 Front - rear flange (ISO MF1-MF2)		KF-12 ___
14 Angle bracket (ISO MS1)		KF-13 ___
15 Front - rear hinge with floating pin		KF-14 ___ AP
16 Support for hinges		KF-41 ___
17 ISO intermediate hinge (ISO MT4)		KLF-14 ___
18 DF magnetic sensor (see accessories section)		DF- ___
19 Cable clamping for DF sensor (see accessories section)		DF-001
20 DHF covering strip (see accessories section)		DHF-0020100
21 Locking unit		L1-N
22 Slide unit		J12