

CARACTERÍSTICAS

Temperatura	-20 ÷ 80 °C
Fluido	ar comprimido
Pressão Máx	15 bar (dependem do tipo de tubo utilizado)
Pressão de trabalho	9 bar
Corpo	tecnopolímero
Elemento de fixação	latão niquelado com O-ring em NBR na versão cilíndrica (padrão) revestimento em teflon na versão cônica (a pedido)
Pinça de travamento	aço inox
Anel de liberação	tecnopolímero
Aplicações	circuitos pneumáticos
Tubos de conexão aconselhados	poliamida PA 10.12, poliuretano Sh.A98, co-poliuretano Sh.55D

Reguladores de fluxo em tecnopolímero

■ HC01/HC02

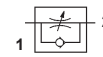
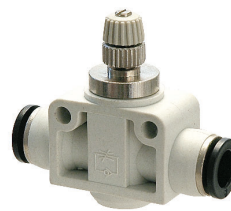
Reguladores de fluxo cotovelo giratório unidirecional



escape	alimentação	Ø	conexão
HC0104M5	HC0204M5	4	M5
HC0106M5	HC0206M5	6	M5
HC010418	HC020418	4	G1/8
HC010618	HC020618	6	G1/8
HC010818	HC020818	8	G1/8
HC010414	HC020414	4	G1/4
HC010614	HC020614	6	G1/4
HC010814	HC020814	8	G1/4
HC011014	HC021014	10	G1/4
HC010838	HC020838	8	G3/8
HC011038	HC021038	10	G3/8
HC011238	HC021238	12	G3/8
HC011012	HC021012	10	G1/2
HC011212	HC021212	12	G1/2

■ HC04

Regulador de fluxo intermediário unidirecional



	Ø1
HC040404	4
HC040606	6
HC040808	8
HC041010	10
HC041212	12

■ HC01T/HC02T

Reguladores de fluxo cotovelo giratório corte chave de fenda unidirecional



escape	alimentação	Ø	conexão
HC01T0418	HC02T0418	4	G1/8
HC01T0618	HC02T0618	6	G1/8
HC01T0818	HC02T0818	8	G1/8
HC01T1018	HC02T1018	10	G1/8
HC01T1218	HC02T1218	12	G1/8
HC01T0614	HC02T0614	6	G1/4
HC01T0814	HC02T0814	8	G1/4
HC01T1014	HC02T1014	10	G1/4
HC01T1214	HC02T1214	12	G1/4
HC01T0638	HC02T0638	6	G3/8
HC01T0838	HC02T0838	8	G3/8
HC01T1038	HC02T1038	10	G3/8
HC01T1238	HC02T1238	12	G3/8

CARACTERÍSTICAS

Temperatura	0 ÷ 70 °C
Fluido	ar comprimido
Pressão Máx	10 bar
Pressão de trabalho	0,3 ÷ 10 bar

Reguladores de fluxo corpo metálico

HC21/HC22

Regulador de fluxo cotovelo giratório unidirecional



	escape	alimentação	Ø	conexão
escape 	HC2104M5	HC2204M5	4	M5
	HC210418	HC220418	4	G1/8
	HC210618	HC220618	6	G1/8
	HC210818	HC220818	8	G1/8
	HC210614	HC220614	6	G1/4
	HC210814	HC220814	8	G1/4
alimentação 	HC211014	HC221014	10	G1/4

HC18/HC19

Regulador de fluxo cotovelo giratório corte chave de fenda unidirecional



	escape	alimentação	Ø	conexão
escape 	HC1804M5	HC1904M5	4	M5
	HC180418	HC190418	4	G1/8
	HC180618	HC190618	6	G1/8
	HC180818	HC190818	8	G1/8
	HC180614	HC190614	6	G1/4
	HC180814	HC190814	8	G1/4
alimentação 	HC181014	HC191014	10	G1/4

HC27/HC28

Regulador de fluxo cotovelo macho/fêmea rosqueado unidirecional

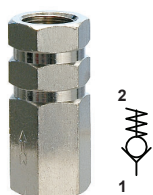


	escape	alimentação	conexão
escape 	HC27M5M5	HC28M5M5	M5
	HC271818	HC281818	G1/8
	HC271414	HC281414	G1/4
	HC273838	HC283838	G3/8
	HC271212	HC281212	G1/2
	alimentação 		

Válvulas sem retorno

HC13

Válvula sem retorno F-F



	conexão
HC1300M5	M5
HC130018	G1/8
HC130014	G1/4
HC130038	G3/8
HC130012	G1/2

A pedido vedações para alta temperatura

HC14

Válvula sem retorno F-M



	conexão
HC140018	G1/8
HC140014	G1/4

A pedido vedações para alta temperatura

HC15

Válvula sem retorno com conexões automáticas para tubo



	Ø
HC150004	4
HC150006	6
HC150008	8

HC17

Válvula sem retorno conexão rosqueada



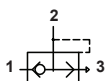
	Ø	conexão
HC170418	4	G1/8
HC170618	6	G1/8
HC170818	8	G1/8
HC170614	6	G1/4
HC170814	8	G1/4
HC171038	10	G3/8
HC171238	12	G3/8
HC171012	10	G1/2
HC171212	12	G1/2

Válvulas com escape rápido

■ HC06

Válvula com escape rápido

fluxo a 6 bar (NI/min)



	conexão	1→2	2→3
HC0600M5	M5	220	300
HC060018	G1/8	680	1100
HC060014	G1/4	1200	2100
HC060038	G3/8	2300	4800
HC060012	G1/2	3400	6100
HC060034	G3/4	3200	8750
HC060001	G1	2900	10.750

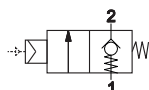
Válvula de bloqueio

Mini regulador de pressão 0 ÷ 8 bar

■ HC34



	M	F	fluxo a 6 bar (NI/min)
HC3418M5	G1/8	M5	400
HC3414M5	G1/4	M5	850
HC343818	G3/8	G1/8	1250



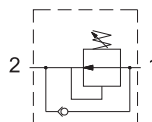
HB40 anel simples



■ HC35



	conexão	fluxo a 6 bar (NI/min)
HC350018	G1/8	580
HC350014	G1/4	750



HB40 anel simples



CARACTERÍSTICAS

Temperatura

-25 ÷ 90 °C

0 ÷ 60 °C (tecnopolímero HC11-12)

Fluido

ar comprimido, vácuo

Pressão Máx

15 bar

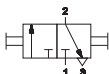
Pressão de trabalho

0 ÷ 10 bar

Válvulas manuais em linha

■ HC05

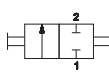
Válvula 3/2 vias deslizante 1/2" fêmea"



	conexão
HC0500M5	M5
HC050018	G1/8
HC050014	G1/4
HC050038	G3/8
HC050012	G1/2
HC050034	G3/4

■ HC07

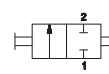
Válvula esfera F-F



	conexão
HC070018	G1/8
HC070014	G1/4
HC070038	G3/8
HC070012	G1/2
HC070034	G3/4

■ HC08

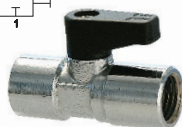
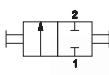
Válvula esfera M-F



	conexão
HC080018	G1/8
HC080014	G1/4
HC080038	G3/8
HC080012	G1/2
HC080034	G3/4

■ HC09

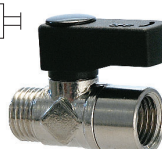
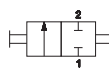
Mini válvula esfera F-F com alavanca preta



	conexão
HC090018	G1/8
HC090014	G1/4

■ HC10

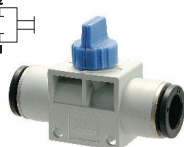
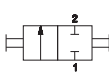
Mini válvula esfera M-F com alavanca preta



	conexão
HC100018	G1/8
HC100014	G1/4

■ HC11

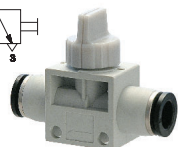
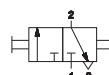
Mini-válvula manual 2/2



	Ø
HC110606	6
HC110808	8
HC111010	10
HC111212	12

■ HC12

Mini-válvula manual 3/2



	Ø
HC120606	6
HC120808	8
HC121010	10
HC121212	12

Silenciadores

<p>HC51 Silenciador plano bronze sinterizado</p>  <table border="0"> <thead> <tr> <th></th> <th>conexão</th> </tr> </thead> <tbody> <tr><td>HC5100M5</td><td>M5</td></tr> <tr><td>HC510018</td><td>G1/8</td></tr> <tr><td>HC510014</td><td>G1/4</td></tr> <tr><td>HC510038</td><td>G3/8</td></tr> <tr><td>HC510012</td><td>G1/2</td></tr> <tr><td>HC510034</td><td>G3/4</td></tr> <tr><td>HC510001</td><td>G1</td></tr> <tr><td>HC510112</td><td>G1 1/2</td></tr> </tbody> </table>		conexão	HC5100M5	M5	HC510018	G1/8	HC510014	G1/4	HC510038	G3/8	HC510012	G1/2	HC510034	G3/4	HC510001	G1	HC510112	G1 1/2	<p>HC52 Silenciador cônico bronze sinterizado</p>  <table border="0"> <thead> <tr> <th></th> <th>conexão</th> </tr> </thead> <tbody> <tr><td>HC5200M5</td><td>M5</td></tr> <tr><td>HC520018</td><td>G1/8</td></tr> <tr><td>HC520014</td><td>G1/4</td></tr> <tr><td>HC520038</td><td>G3/8</td></tr> <tr><td>HC520012</td><td>G1/2</td></tr> <tr><td>HC520034</td><td>G3/4</td></tr> <tr><td>HC520001</td><td>G1</td></tr> </tbody> </table>		conexão	HC5200M5	M5	HC520018	G1/8	HC520014	G1/4	HC520038	G3/8	HC520012	G1/2	HC520034	G3/4	HC520001	G1	<p>HC53 Silenciador cônico bronze sinterizado cabeça quadrada</p>  <table border="0"> <thead> <tr> <th></th> <th>conexão</th> </tr> </thead> <tbody> <tr><td>HC5300M5</td><td>M5</td></tr> <tr><td>HC530018</td><td>G1/8</td></tr> <tr><td>HC530014</td><td>G1/4</td></tr> <tr><td>HC530038</td><td>G3/8</td></tr> <tr><td>HC530012</td><td>G1/2</td></tr> <tr><td>HC530034</td><td>G3/4</td></tr> <tr><td>HC530001</td><td>G1</td></tr> </tbody> </table>		conexão	HC5300M5	M5	HC530018	G1/8	HC530014	G1/4	HC530038	G3/8	HC530012	G1/2	HC530034	G3/4	HC530001	G1
	conexão																																																			
HC5100M5	M5																																																			
HC510018	G1/8																																																			
HC510014	G1/4																																																			
HC510038	G3/8																																																			
HC510012	G1/2																																																			
HC510034	G3/4																																																			
HC510001	G1																																																			
HC510112	G1 1/2																																																			
	conexão																																																			
HC5200M5	M5																																																			
HC520018	G1/8																																																			
HC520014	G1/4																																																			
HC520038	G3/8																																																			
HC520012	G1/2																																																			
HC520034	G3/4																																																			
HC520001	G1																																																			
	conexão																																																			
HC5300M5	M5																																																			
HC530018	G1/8																																																			
HC530014	G1/4																																																			
HC530038	G3/8																																																			
HC530012	G1/2																																																			
HC530034	G3/4																																																			
HC530001	G1																																																			
<p>HC54 Silenciador com regulador de escape estreito</p>  <table border="0"> <thead> <tr> <th></th> <th>conexão</th> </tr> </thead> <tbody> <tr><td>HC5400M5</td><td>M5</td></tr> <tr><td>HC540018</td><td>G1/8</td></tr> <tr><td>HC540014</td><td>G1/4</td></tr> <tr><td>HC540038</td><td>G3/8</td></tr> <tr><td>HC540012</td><td>G1/2</td></tr> <tr><td>HC540034</td><td>G3/4</td></tr> <tr><td>HC540001</td><td>G1</td></tr> </tbody> </table>		conexão	HC5400M5	M5	HC540018	G1/8	HC540014	G1/4	HC540038	G3/8	HC540012	G1/2	HC540034	G3/4	HC540001	G1	<p>HC55 Silenciador com regulador de escape</p>  <table border="0"> <thead> <tr> <th></th> <th>conexão</th> </tr> </thead> <tbody> <tr><td>HC5500M5</td><td>M5</td></tr> <tr><td>HC550018</td><td>G1/8</td></tr> <tr><td>HC550014</td><td>G1/4</td></tr> <tr><td>HC550038</td><td>G3/8</td></tr> <tr><td>HC550012</td><td>G1/2</td></tr> <tr><td>HC550034</td><td>G3/4</td></tr> <tr><td>HC550001</td><td>G1</td></tr> </tbody> </table>		conexão	HC5500M5	M5	HC550018	G1/8	HC550014	G1/4	HC550038	G3/8	HC550012	G1/2	HC550034	G3/4	HC550001	G1	<p>HC56 Silenciador dinâmico em tecnopolímero</p>  <table border="0"> <thead> <tr> <th></th> <th>conexão</th> </tr> </thead> <tbody> <tr><td>HC560018</td><td>G1/8</td></tr> <tr><td>HC560014</td><td>G1/4</td></tr> <tr><td>HC560038</td><td>G3/8</td></tr> <tr><td>HC560012</td><td>G1/2</td></tr> <tr><td>HC560034</td><td>G3/4</td></tr> <tr><td>HC560001</td><td>G1</td></tr> </tbody> </table>		conexão	HC560018	G1/8	HC560014	G1/4	HC560038	G3/8	HC560012	G1/2	HC560034	G3/4	HC560001	G1				
	conexão																																																			
HC5400M5	M5																																																			
HC540018	G1/8																																																			
HC540014	G1/4																																																			
HC540038	G3/8																																																			
HC540012	G1/2																																																			
HC540034	G3/4																																																			
HC540001	G1																																																			
	conexão																																																			
HC5500M5	M5																																																			
HC550018	G1/8																																																			
HC550014	G1/4																																																			
HC550038	G3/8																																																			
HC550012	G1/2																																																			
HC550034	G3/4																																																			
HC550001	G1																																																			
	conexão																																																			
HC560018	G1/8																																																			
HC560014	G1/4																																																			
HC560038	G3/8																																																			
HC560012	G1/2																																																			
HC560034	G3/4																																																			
HC560001	G1																																																			
<p>HC57 Silenciador plástico polietileno</p>  <table border="0"> <thead> <tr> <th></th> <th>conexão</th> </tr> </thead> <tbody> <tr><td>HC5700M5</td><td>M5</td></tr> <tr><td>HC570018</td><td>G1/8</td></tr> <tr><td>HC570014</td><td>G1/4</td></tr> <tr><td>HC570038</td><td>G3/8</td></tr> <tr><td>HC570012</td><td>G1/2</td></tr> <tr><td>HC570034</td><td>G3/4</td></tr> <tr><td>HC570001</td><td>G1</td></tr> </tbody> </table>		conexão	HC5700M5	M5	HC570018	G1/8	HC570014	G1/4	HC570038	G3/8	HC570012	G1/2	HC570034	G3/4	HC570001	G1	<p>HC58 Silenciador em tecnopolímero</p>  <table border="0"> <thead> <tr> <th></th> <th>conexão</th> </tr> </thead> <tbody> <tr><td>HC580018</td><td>G1/8</td></tr> <tr><td>HC580014</td><td>G1/4</td></tr> <tr><td>HC580038</td><td>G3/8</td></tr> <tr><td>HC580012</td><td>G1/2</td></tr> <tr><td>HC580034</td><td>G3/4</td></tr> <tr><td>HC580001</td><td>G1</td></tr> </tbody> </table>		conexão	HC580018	G1/8	HC580014	G1/4	HC580038	G3/8	HC580012	G1/2	HC580034	G3/4	HC580001	G1	<p>HC59 Silenciador com cabeça cúpular em aço</p>  <table border="0"> <thead> <tr> <th></th> <th>conexão</th> </tr> </thead> <tbody> <tr><td>HC5900M5</td><td>M5</td></tr> <tr><td>HC590018</td><td>G1/8</td></tr> <tr><td>HC590014</td><td>G1/4</td></tr> <tr><td>HC590038</td><td>G3/8</td></tr> <tr><td>HC590012</td><td>G1/2</td></tr> <tr><td>HC590034</td><td>G3/4</td></tr> <tr><td>HC590001</td><td>G1</td></tr> </tbody> </table>		conexão	HC5900M5	M5	HC590018	G1/8	HC590014	G1/4	HC590038	G3/8	HC590012	G1/2	HC590034	G3/4	HC590001	G1				
	conexão																																																			
HC5700M5	M5																																																			
HC570018	G1/8																																																			
HC570014	G1/4																																																			
HC570038	G3/8																																																			
HC570012	G1/2																																																			
HC570034	G3/4																																																			
HC570001	G1																																																			
	conexão																																																			
HC580018	G1/8																																																			
HC580014	G1/4																																																			
HC580038	G3/8																																																			
HC580012	G1/2																																																			
HC580034	G3/4																																																			
HC580001	G1																																																			
	conexão																																																			
HC5900M5	M5																																																			
HC590018	G1/8																																																			
HC590014	G1/4																																																			
HC590038	G3/8																																																			
HC590012	G1/2																																																			
HC590034	G3/4																																																			
HC590001	G1																																																			
<p>HC60 Silenciador cônico com niple hexagonal</p>  <table border="0"> <thead> <tr> <th></th> <th>conexão</th> </tr> </thead> <tbody> <tr><td>HC6000M5</td><td>M5</td></tr> <tr><td>HC600018</td><td>G1/8</td></tr> <tr><td>HC600014</td><td>G1/4</td></tr> <tr><td>HC600038</td><td>G3/8</td></tr> <tr><td>HC600012</td><td>G1/2</td></tr> <tr><td>HC600034</td><td>G3/4</td></tr> <tr><td>HC600001</td><td>G1</td></tr> <tr><td>HC600112</td><td>G1 1/2</td></tr> </tbody> </table>		conexão	HC6000M5	M5	HC600018	G1/8	HC600014	G1/4	HC600038	G3/8	HC600012	G1/2	HC600034	G3/4	HC600001	G1	HC600112	G1 1/2	<p>HC61 Silenciador embutido</p>  <table border="0"> <thead> <tr> <th></th> <th>conexão</th> </tr> </thead> <tbody> <tr><td>HC6100M5</td><td>M5</td></tr> <tr><td>HC610018</td><td>G1/8</td></tr> <tr><td>HC610014</td><td>G1/4</td></tr> <tr><td>HC610038</td><td>G3/8</td></tr> <tr><td>HC610012</td><td>G1/2</td></tr> <tr><td>HC610034</td><td>G3/4</td></tr> <tr><td>HC610001</td><td>G1</td></tr> </tbody> </table>		conexão	HC6100M5	M5	HC610018	G1/8	HC610014	G1/4	HC610038	G3/8	HC610012	G1/2	HC610034	G3/4	HC610001	G1																	
	conexão																																																			
HC6000M5	M5																																																			
HC600018	G1/8																																																			
HC600014	G1/4																																																			
HC600038	G3/8																																																			
HC600012	G1/2																																																			
HC600034	G3/4																																																			
HC600001	G1																																																			
HC600112	G1 1/2																																																			
	conexão																																																			
HC6100M5	M5																																																			
HC610018	G1/8																																																			
HC610014	G1/4																																																			
HC610038	G3/8																																																			
HC610012	G1/2																																																			
HC610034	G3/4																																																			
HC610001	G1																																																			